



EP/L014106/1  
**Supergen Wind Hub**  
Sustainable Power Generation and Supply  
- Wind Energy Technologies

**D4.2: A proposed standard for the reporting of operational performance and reliability data from wind farms**

Delivered by:	Durham University		
Author(s):	Donatella Zappalá, Christopher J Crabtree		
Delivery date:	30 <sup>th</sup> November 2017		
Distribution list:	Supergen Wind Consortium		
Version No	Status	Date	Checked by
1	Draft	30 <sup>th</sup> November 2017	DZ
2	Draft	January 2018	DZ
2	Final	January 2018	CJC

This deliverable is composed of two parts:

1. A published paper on the development of wind energy generation in the UK and the challenges faced by the wind industry including reliability, performance and condition monitoring, particularly in the offshore environment: Crabtree, C. J., Zappalá, D. & Hogg, S. I. (2015), "Wind Energy: UK Experiences and Offshore Operational Challenges", Proceedings of the Institution of Mechanical Engineers, Part A: Journal of Power and Energy 229(7): 727-746. An analysis of large UK offshore and onshore wind farm capacity factor data has been reported in this paper. The data used in the study covers the 10-year period from July 2004 to June 2014 with more than 7000 turbine years of operation. The paper provides a breakdown of the cost of energy generation from wind farms and highlights the importance of reducing operation and maintenance costs from current levels. The challenges that must be overcome and the research that is currently underway to help to achieve this have been reviewed. Improved data handling and analysis techniques, integration of condition monitoring and SCADA systems and improved cost/benefit analysis from adopting condition based maintenance strategies are all identified as being important steps towards achieving this goal and have been discussed in the paper. Finally, the need for more open sharing of operating data across the wind industry and research community to accelerate the development process has been highlighted.
2. A short report including:
  - a. An update of the preliminary results published in the paper above, including a wider dataset of UK offshore and large onshore wind farm performance. The data covers the 11-year period from October 2005 to October 2016 for large onshore farms and the 12-year period from July 2004 to November 2016 for offshore farms, with more than 10000 turbine years of operation. The paper provides a more up-to-date and statistically significant insight into the performance of R2 offshore wind farms compared to the earlier Round 1 farms and to large onshore farms. Results confirm the positive trends observed in the preliminary results published in the above paper.
  - b. A brief review of recent and ongoing work on proposed standards for reporting of reliability data from wind farms. As discussed in the paper above, improving the intrinsic reliability of wind turbine assets has been identified as the major contributor towards achieving the offshore wind cost reduction targets. This will be only possible through the development of standard methodologies for reliability data collection and analysis, and through close collaboration between manufacturers, operators and research organisations. This report first describes the results achieved within the EU FP7 Reliawind project on the definition of a common wind turbine taxonomy and a universal database structure for storing downtime events from multiple manufacturers' turbines. The report then briefly reviews the ongoing SPARTA (System Performance, Availability and Reliability Trend Analysis) project on the creation of a UK offshore wind database for sharing anonymised offshore wind farm performance and maintenance data. SPARTA is a collaborative project between ORE Catapult, The Crown Estate and offshore wind farm owner/operators performance data platform. For the first time in the wind industry, this project aims at providing owner/operator participants with benchmarked data, helping to identify operational improvements and cost reduction opportunities at both company and sector-wide levels.

## Durham Research Online

---

### Deposited in DRO:

11 August 2015

### Version of attached file:

Published Version

### Peer-review status of attached file:

Peer-reviewed

### Citation for published item:

Crabtree, C. J. and Zappalá, D. and Hogg, S. I. (2015) 'Wind energy : UK experiences and offshore operational challenges.', Proceedings of the Institution of Mechanical Engineers, Part A : journal of power and energy., 229 (7). pp. 727-746.

### Further information on publisher's website:

<http://dx.doi.org/10.1177/0957650915597560>

### Publisher's copyright statement:

This article is distributed under the terms of the Creative Commons Attribution 3.0 License (<http://www.creativecommons.org/licenses/by/3.0/>) which permits any use, reproduction and distribution of the work without further permission provided the original work is attributed as specified on the SAGE and Open Access page (<https://us.sagepub.com/en-us/nam/open-access-at-sage>).

### Additional information:

## Use policy

---

The full-text may be used and/or reproduced, and given to third parties in any format or medium, without prior permission or charge, for personal research or study, educational, or not-for-profit purposes provided that:

- a full bibliographic reference is made to the original source
- a [link](#) is made to the metadata record in DRO
- the full-text is not changed in any way

The full-text must not be sold in any format or medium without the formal permission of the copyright holders.

Please consult the [full DRO policy](#) for further details.

# Wind energy: UK experiences and offshore operational challenges

Christopher J Crabtree, Donatella Zappalá and Simon I Hogg

Proc IMechE Part A:

J Power and Energy

0(0) 1–20

© IMechE 2015



Reprints and permissions:

sagepub.co.uk/journalsPermissions.nav

DOI: 10.1177/0957650915597560

pia.sagepub.com



## Abstract

This paper presents a discussion of the development of wind energy generation in the United Kingdom and the challenges faced by the wind industry including reliability, performance and condition monitoring, particularly in the offshore environment. The worldwide installed capacity of offshore wind has now risen to over 7 GW, with an ever increasing deployment rate of new assets. About 90% of the global currently installed capacity is in Northern Europe, with the United Kingdom having the world's largest share at 4 GW. Capacity factor data from UK offshore wind farms is presented, providing an insight into the current performance of large Round 2 offshore wind farms compared to the earlier Round 1 farms and to onshore farms. The data reveal that the United Kingdom's Round 2 offshore farms are achieving an average monthly capacity factor of 38.3% with a peak value of 75.8%. The older Round 1 farms have a lower average capacity factor of 33.6% while large onshore farms with capacities above 100 MW have achieved 25.6%. Offshore wind turbine performance has improved over time, and the industry is applying the learning from early experiences to achieve better performances at the more recently installed farms. Despite these improvements in turbine availability, the cost of energy from wind, particularly offshore, remains too high for it to be a commercially viable form of generation without subsidies. Reducing the cost of energy from wind to economically sustainable levels is the most important challenge facing the industry today. Operation and maintenance costs constitute up to 30 % of the total cost of energy from wind in large farms. The industry must overcome the challenges associated with improving component reliability and the development and adoption by operators of appropriate condition monitoring systems and maintenance strategies, in order to reduce costs to sustainable levels. Research and development work carried out with these goals in mind is also reviewed in the paper.

## Keywords

Wind, offshore wind, reliability, performance, condition monitoring

Date received: 9 December 2014; accepted: 15 June 2015

## Introduction

The challenges of climate change, energy security and cost of energy are becoming ever more present for governments across the world. As a result, governments are changing their approaches to electricity generation and countries are seeing significant diversification in their energy generation mixes, moving towards renewable sources, nuclear and clean conventional plant.

The exploitation of renewable energy resources is central to European Union (EU) environmental and energy policy goals. The EU has committed to a legally binding target of meeting 20% of its total energy demand (heating, transport and electricity) from renewable sources by 2020. If this target is to be realised it means that 34% of electricity generated<sup>1</sup> will need to come from renewable sources by this date. In a communication entitled 'A policy framework for climate and energy in the period from 2020 to 2030,' the EU proposes increasing the share of renewable energy to at least 27% of EU energy consumption

by 2030 with the aim of decarbonising the economy by between 80% and 95% by 2050.<sup>2</sup>

Wind energy has become the strongest and fastest growing renewable energy technology worldwide over the last 30 years, thanks largely to recent technological advances and commercial growth. It now plays a central role in the immediate and longer-term energy strategies of many countries.

By the end of 2013, the global installed capacity of wind turbines (WT) stood at 318.1 GW, of which 117.3 GW was installed in the EU.<sup>3</sup> Projections by the European Wind Energy Association (EWEA) in 2011 suggest that 230 GW of wind capacity will be

School of Engineering and Computing Sciences, Durham University, UK

### Corresponding author:

Christopher J Crabtree, School of Engineering and Computing Sciences, Durham University, Durham, DH1 3LE, UK.

Email: c.j.crabtree@durham.ac.uk

installed in the EU by 2020, rising to 400 GW by 2030 and 735 GW by 2050.<sup>4</sup> In 2007, the European Commission reported<sup>5</sup> a lower target installed capacity of 146 GW by 2030 of which 129 GW would be onshore and 17 GW offshore. The EWEA 2014 European Statistics report<sup>6</sup> shows 128.8 GW of installed capacity in the EU with approximately 120 GW onshore and 8 GW offshore. These current figures suggest that the EU is on course to pass the European Commission expectation for 2030; however, there is a long way to go before the EWEA projections are realised.

A significant proportion of this forecast installed capacity is expected to be offshore, with many new large-scale sites already identified for development in Europe due to the favourable wind resources and sub-sea conditions.

Offshore wind has advantages over onshore both technically and in terms of public perception. Offshore average wind speeds are higher and turbulence is generally lower than in the onshore environment, which results in greater energy capture for a given wind farm size. Politically and in terms of public perception, offshore wind has the advantage that visual impact and noise concerns are largely mitigated by distance, although challenges remain with respect to marine life. There is also significant potential for very large-scale offshore sites to be developed. Onshore farms are generally much more limited in capacity due to space constraints; however, large-scale sites have been developed in the USA where the large plains can deliver favourable wind conditions.

The worldwide installed capacity of offshore wind current stands at approximately 7 GW<sup>3</sup> and is increasing on a daily basis. Around 90% of this capacity is in northern Europe. The United Kingdom is the world leader in offshore wind with an installed capacity of over 4 GW. Industry projections suggest that there will be 8 GW of UK offshore capacity by 2016 rising to around 18 GW by 2020, supplying 18–20% of UK electricity demand.<sup>7</sup>

The performance of offshore wind farms is explored in this paper by making use of extensive capacity factor data from large UK onshore and offshore wind farms. This data also allows the improvement in wind farm performance as operators gain experience to be assessed.

The cost of energy from wind farms is one of the main barriers that is currently restricting wider adoption of this form of renewable energy generation. Operating and maintenance (O&M) costs are significant, particularly for offshore wind. The technical challenges that must be overcome in order to reduce O&M costs are also discussed in the paper.

## Performance of UK wind farms

Initially, concerns existed over the feasibility of offshore wind in the United Kingdom, with reliability and potential reduced availability due to access difficulties, being cited as core issues. However, the launch

in 2001 of the 'Offshore Wind Capital Grants Scheme' by the UK Department of Trade and Industry led to investment in five farms of 60–90 MW scale (North Hoyle, Scroby Sands, Kentish Flats, Barrow and Burbo Bank). All of these have now been fully operational for at least 7 years. The sites offered the potential for the United Kingdom to gain vital experience of offshore technology and operations. Under the Capital Grants Scheme, a number of reports on the operating history of the wind farms were made publicly available. The data, analysed in Feng et al.,<sup>8</sup> found that the farms were achieving an overall average availability of 80.2% with an average capacity factor over 3 years of 29.5%.<sup>9</sup> However, the capacity factor remained below the estimate for EU offshore wind farms of 35%, based on Danish experience. This was partly due to the low availability of 80.2%.

In the United Kingdom, The Crown Estate has now held three rounds of bidding for the award of wind farm site development rights in UK waters, resulting in the United Kingdom now having 22 operational offshore wind farms with capacities ranging from 60 MW to 630 MW. The UK offshore portfolio is summarised in Table 1. London Array and Greater Gabbard are, respectively, the world's largest and second largest offshore wind farms by capacity.

In addition to the farms listed in Table 1, the United Kingdom has two test sites, each with two turbines. The two 2 MW Vestas turbines at Blyth, Northumberland, were the United Kingdom's first offshore turbines. These have been operating intermittently since the year 2000. The Beatrice wind farm, in the Moray Firth, features two 5 MW REpower turbines. These were constructed in order to assess the feasibility of installation and operation in deeper waters than the United Kingdom had previously experienced. No continuous data is available from these test sites. The map numbers in Table 1 correspond to the map of offshore wind farms in Figure 1.

The performance of the full-scale offshore wind farms can be investigated by examining available capacity factor or production data. Capacity factor is defined as the delivered annual energy yield (MWh) divided by the theoretical maximum energy production of a farm or turbine over a 1-year period i.e. rated power (MW) multiplied by the 8760 h in a year.<sup>11</sup>

$$\text{Capacity Factor} = \frac{\text{Annual Energy Production}}{\text{Rated Power} \times 8760} \times 100\%$$

Capacity factor data is also calculated on a monthly basis using a similar definition to that given above, but for a 1 month rather than 1-year time period.

Monthly capacity factor data has been reported by each of the wind farms in Table 1 through a number of different schemes:

- Renewable Obligation subsidy certificates (ROCs)

**Table 1.** UK offshore wind farms. Data collated by the Renewable Energy Foundation (REF),<sup>10</sup> covering the 10-year period from July 2004 to June 2014.

Map	Wind farm	Turbine manufacturer	Turbine capacity (MW)	Number of turbines	Farm capacity (MW)	Award round	Capacity factor (%)	Reported months
1	Barrow	Vestas	3.0	30	90.0	1	34.3	100
2	Burbo Bank	Siemens	3.6	25	90.0	1	33.6	84
3	Gunfleet Sands I	Siemens	3.6	30	108.0	1	32.9	56
4	Lynn	Siemens	3.6	27	97.2	1	33.3	69
5	Inner Dowsing	Siemens	3.6	27	97.2	1	34.2	70
6	Kentish Flats	Vestas	3.0	30	90.0	1	31.2	106
7	North Hoyle	Vestas	2.0	30	60.0	1	33.4	127
8	Ormonde	REpower	5.0	30	150.0	1	38.8	32
9	Rhyl Flats	Siemens	3.6	25	90.0	1	33.4	56
10	Robin Rigg (East)	Vestas	3.0	30	90.0	1	33.5	50
11	Robin Rigg (West)	Vestas	3.0	30	90.0	1	34.7	57
12	Scroby Sands	Vestas	2.0	30	60.0	1	29.9	118
13	Teesside	Siemens	2.3	27	62.1	1	24.6	12
14	London Array	Siemens	3.6	175	630.0	2	37.3	19
15	Greater Gabbard	Siemens	3.6	140	504.0	2	32.9	34
16	Thanet	Vestas	3.0	100	300.0	2	32.4	48
17	Sheringham Shoal	Siemens	3.6	88	316.8	2	35.5	26
18	Walney 2	Siemens	3.6	51	183.6	2	41.9	32
19	Walney 1	Siemens	3.6	51	183.6	2	38.7	40
20	Lincs	Siemens	3.6	75	270.0	2	38.2	15
21	Gunfleet Sands II	Siemens	3.6	18	64.8	2	34.9	59
22	West of Duddon Sands	Siemens	3.6	108	388.8	2	11.8	3
			Total	1177	4016.1			

- Renewable Energy Guarantees of Origins (REGOs)
- Climate Change Levy Exemption Certificates (LECs)

Data from these three sources have been compiled by the Renewable Energy Foundation and is publicly available via their online database.<sup>10</sup> The 2010 study of the UK Round 1 sites<sup>8</sup> included data from North Hoyle, Scroby Sands, Kentish Flats and Barrow wind farms, with a total of 270 turbine years summarised within the capacity factor data. The offshore wind farm capacity factor data used in this study<sup>10</sup> is much more extensive than this, including approximately 4000 turbine years.

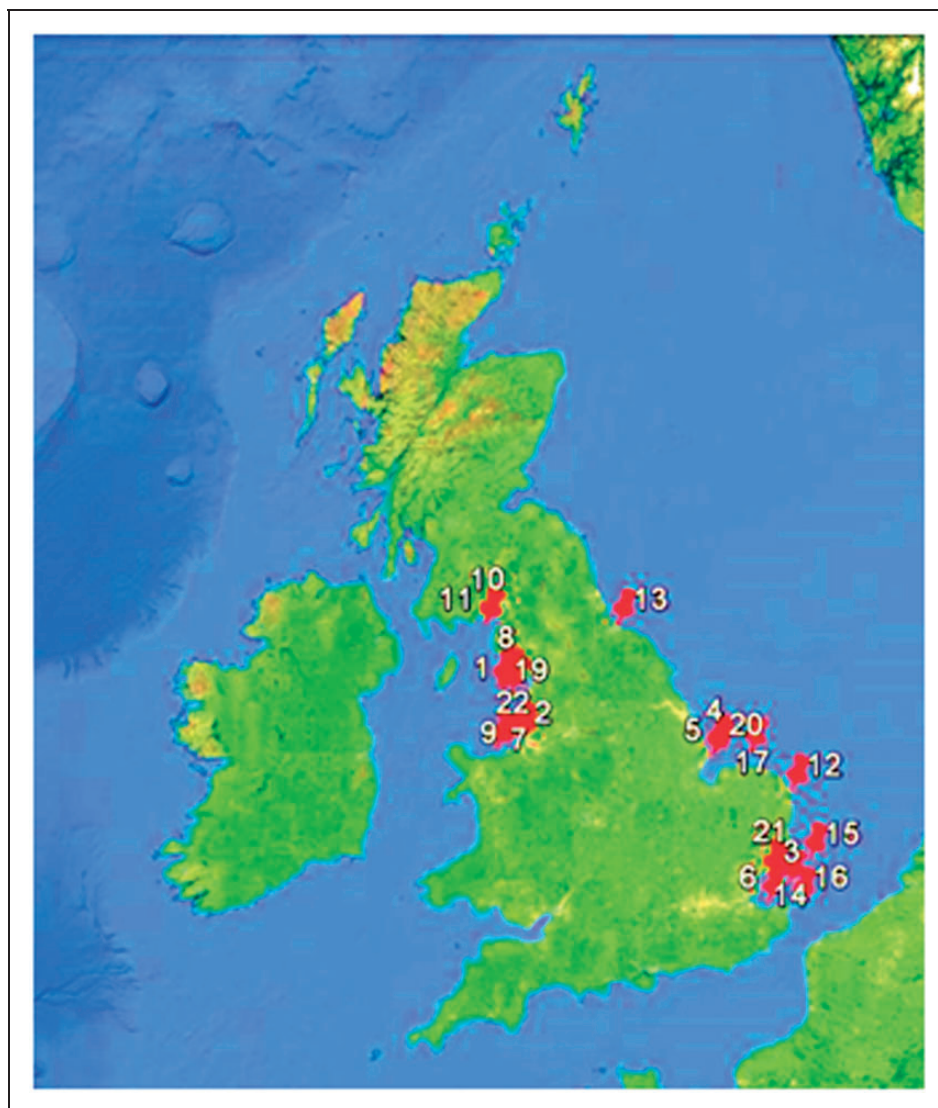
Capacity factor data are also available for onshore wind farms from the Renewable Energy Foundation.<sup>10</sup> To allow a reasonable comparison between onshore and offshore wind farms, 12 onshore wind farms with capacities greater than 100 MW are considered. The available data, covering approximately 3000 wind turbine years, is summarised in Table 2. The map numbers in Table 2 correspond to the map in Figure 2.

Table 3 summarises the data presented in this report against the previous study of UK capacity factor by Feng et al.<sup>8</sup>

For the majority of the wind farms in Tables 1 and 2, the turbines were commissioned as they were constructed. This resulted in initially very low farm-level capacity factors being reported during periods when only a small number of turbines were generating and many more were still under construction. Previous studies, including<sup>12</sup> removed the early data based on a threshold capacity factor in order to ensure that the data used was representative of normal operation of the farm.

Here, the dates of full commissioning were collated from various public sources<sup>13,14</sup> and all data before these dates was discarded. Any subsequent low capacity factor values are retained and assumed to be part of normal operation. Any lower value months might, for example, be caused by periods of scheduled or unscheduled downtime for a significant number of turbines, which must be taken into account in any meaningful analysis. The resulting dataset is summarised in Table 4 which shows the number of points included in the original and cleaned datasets. Approximately 82% of the original data was retained. No wind farms included in this study were re-powered during the reporting period and any fluctuations in capacity should be considered to be part of normal farm operation.

Figure 3 shows the number of reporting wind farms with farm age from date of commissioning split into



**Figure 1.** Map of UK offshore wind farms. Map data: Google, SIO, NOAA, US Navy, NGA, GEBCO, Image Landsat.

**Table 2.** UK onshore wind farms with capacity greater than 100 MW. Data collated by the Renewable Energy Foundation (REF),<sup>10</sup> covering the 9-year period from October 2005 to June 2014.

Map	Wind farm	Turbine manufacturer	Turbine capacity (MW)	Number of turbines	Farm capacity (MW)	Capacity factor	Reported months
1	Whitelee	Siemens	2.3	140	322.0	24.0	69
2	Whitelee Extension	Alstom	2.9	75	217.0	19.9	20
3	Griffin	Siemens	2.3	68	156.4	18.7	33
4	Fallago Rig	Vestas	3	48	144.0	29.8	17
5	Harestanes	Vestas	2	68	136.0	13.4	5
6	Crystal Rig II	Siemens	2.3	60	138.0	29.3	52
7	Clyde (South)	Siemens	2.3	56	128.8	29.0	35
8	Black Law	Siemens	2.3	54	124.2	21.9	110
9	Arecleoch	Gamesa	2	60	120.0	26.8	42
10	Hadyard Hill	Bonus	2.3	52	119.6	24.0	102
11	Clyde (Central)	Siemens	2.3	49	112.7	28.2	29
12	Clyde (North)	Siemens	2.3	47	108.1	33.8	25
			Total	777	1826.8		



**Figure 2.** Map of UK large (> 100 MW) onshore wind farms. Map data: Google, SIO, NOAA, US Navy, NGA, GEBCO, Image Landsat.

**Table 3.** Capacity factor data population for this and previous studies.

Wind farm	Turbines	Capacity (MW)	Turbine years
Feng, Tavner, Long <sup>8</sup>	120	300	270
This paper (offshore)	1177	4016	4026
This paper (onshore > 100 MW)	777	1827	3000

**Table 4.** Summary of original and cleaned data.

Wind farm	Raw turbine years	Filtered turbine years	Percentage turbine years retained
Offshore	4026	3116	77.4
Onshore > 100 MW	3000	2597	86.6

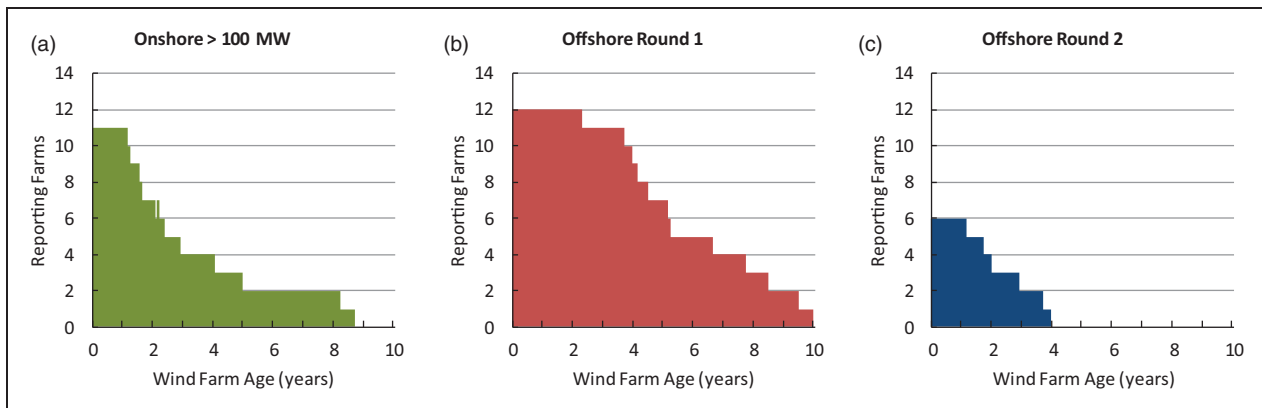
offshore Round 1, Round 2 and Onshore > 100 MW categories. The most comprehensive historical data is available for Round 1 offshore wind farms, with some farms now having completed 10 full years of operation. Figure 4 summarises the performance of turbines for each of the three wind farm categories, over their lives to date. The distributions are clear and suggest that few extremes of operation are being encountered. It should be noted that the data in Figure 4(c) is relatively sparse and therefore not as statistically significant as the other categories; however, the

distribution obtained from the data is similar to the other datasets shown.

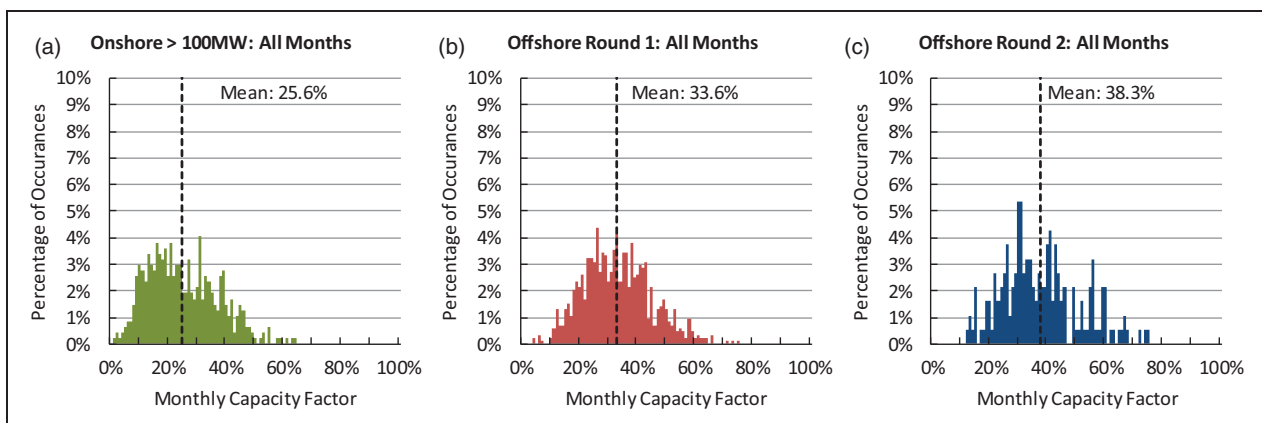
Table 5 summarises the average monthly capacity factors across the United Kingdom's different wind farm categories as shown in Figure 4. As might be expected, the Round 2 offshore farms achieve the highest average monthly capacity factor across farms of 38.3% with a peak of 75.8%. Round 1 farms provide the second highest capacity factor while large onshore farms achieve a modest but respectable 25.6%. A previous analysis<sup>15</sup> suggested a capacity factor distribution with mean of 26.3 % for all UK onshore wind farms installed since 1990. This is consistent with the new data shown here. The standard errors on the means (SEM) given in Table 5 suggest that the calculated means are acceptably precise for all categories of site, in all cases being 1% or below. Greatest precision is seen for the Round 1 dataset, which also dominates the SEM for all offshore farms, as a result of the larger number of reported months available for Round 1 sites (859 points) compared to Round 2 (187 points).

The distributions of capacity factor can be broken down to illustrate performance over time. Figures 5 and 6 show histograms of capacity factor with turbine age for, respectively, onshore > 100 MW and Round 1 offshore sites. For Round 2 sites, not enough data is available to form a meaningful histogram beyond year three. There is a noticeable difference between Figure 5 and Figure 6 in that the average capacity factor with time increases offshore but decreases onshore. It can also be seen that the distributions become less stable over time, with greater noise present, particularly beyond year six because of the fewer observations for older farms. The causes of this change in capacity factor distribution cannot be directly inferred from the data as capacity factors depend on a number of variables including wind speed, turbine availability and curtailment, for example. However, the data can be compared with findings from Hughes<sup>12</sup> and Staffell and Green<sup>15</sup> which state that turbine performance is decreasing over time as machines age. The data in Figure 6 (Round 1 offshore) suggests improving performance over time, with average monthly capacity factors over 3-year periods by year of operation increasing from 33.1% to 35%. Two possible explanations for this improvement are that average monthly wind speeds may have increased continuously over the 9-year period of operation, leading to higher energy yield, or that operation and maintenance regimes have matured to reduce downtime, leading to increased availability for energy production. Further study is required to fully understand why the capacity factor of Round 1 offshore wind farms has increased with time despite ageing assets.

The data for large onshore farms (> 100 MW) show a decrease in capacity factor with age, when the distributions are plotted by farm age (Figure 5). This could result from a number of factors which cannot



**Figure 3.** Number of reporting wind farms with farm age from commissioning for: (a) large onshore, (b) offshore Round 1 and (c) offshore Round 2 wind farms.



**Figure 4.** Histogram of capacity factors normalised to the total number of reported months for: (a) large onshore, (b) offshore Round 1 and (c) offshore Round 2 wind farms.

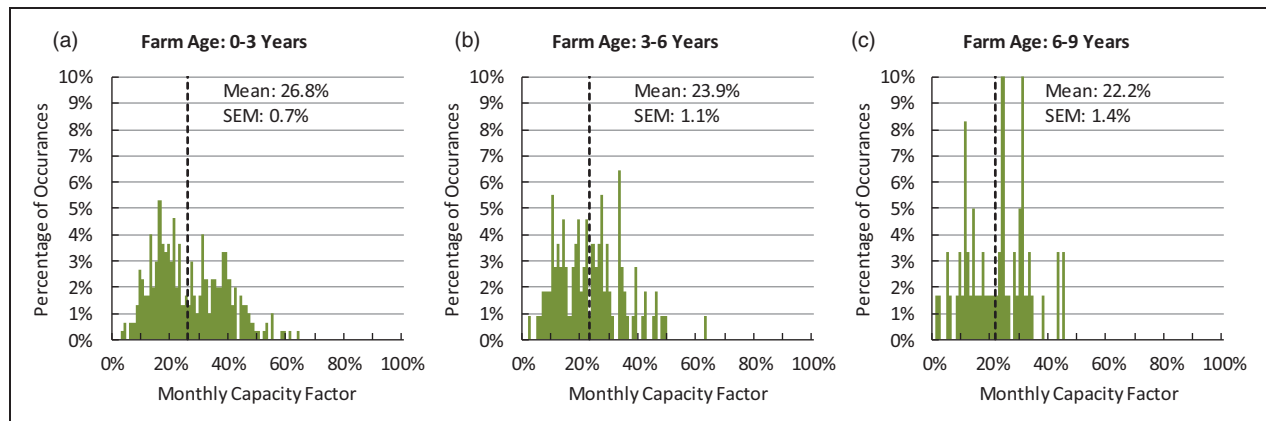
**Table 5.** Summary of capacity factors for UK large onshore and offshore wind farm fleets.

Category	Average monthly capacity factor	Standard error on the mean (SEM)	Peak monthly capacity factor
Onshore > 100 MW	25.6%	0.6%	64.1%
Round 1 offshore	33.6%	0.4%	75.7%
Round 2 offshore	38.3%	1.0%	75.8%
All offshore	34.5%	0.4%	75.8%

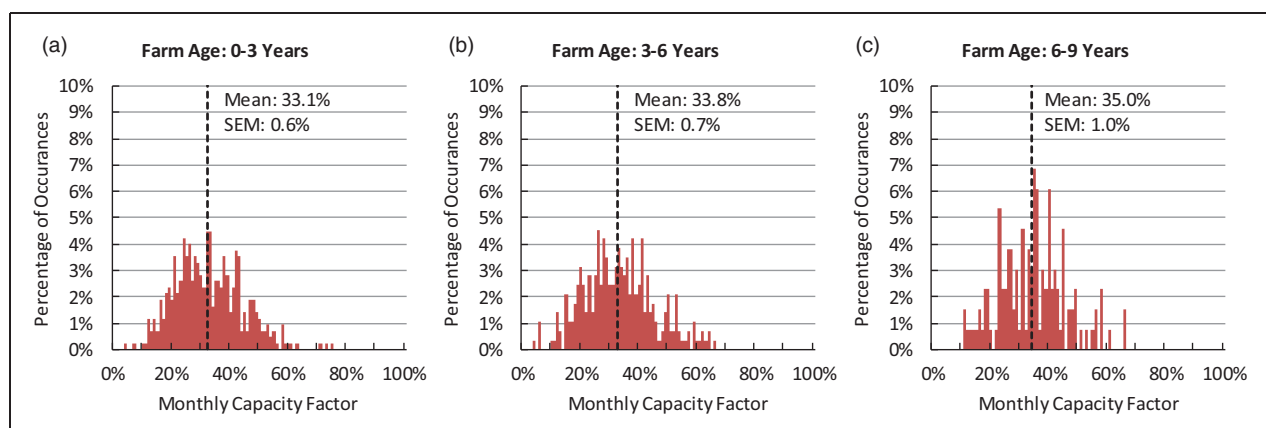
be understood directly from the available data. Figure 7 goes some way to illustrating the challenge of interpreting capacity factor data and explaining the downward trend. It is generally expected that newer wind farms will include more modern turbines and will be subject to the more developed maintenance strategies. This is likely to skew results in some manner. The effect is most noticeable in Figure 7(a), showing the 12-month moving average of monthly capacity factor for each large onshore wind farm

(individual grey lines) and the average (thick black line). The moving average smooths the variation in performance of the different farms and reveals a downwards trend in capacity factor with increased variation beyond 36 months. However, it can be seen that those wind farms operating for more than 60 months have been consistently operating at lower capacity factors throughout their lives. The overall downward trend results from the addition of new, higher performing wind farms which raise the average capacity factor in early years. With the constant addition of new technologies to the UK wind generation portfolio, it is difficult to produce statistically reliable results from such a dynamic dataset.

Conversely, Figure 7(b) shows the same data but for Round 1 offshore farms. In this case the capacity factor remains essentially constant with time. This is caused by the higher performing newer assets compensating for the low early performance of the older assets (as shown in Figure 6). For Round 2 offshore farms, little data is available at present for 12-month averaging. It is interesting to note from the data shown in Figure 7(c) that early indications are that Round 2 wind farms are achieving higher capacity



**Figure 5.** Capacity factor distribution with age for onshore wind farms > 100 MW.



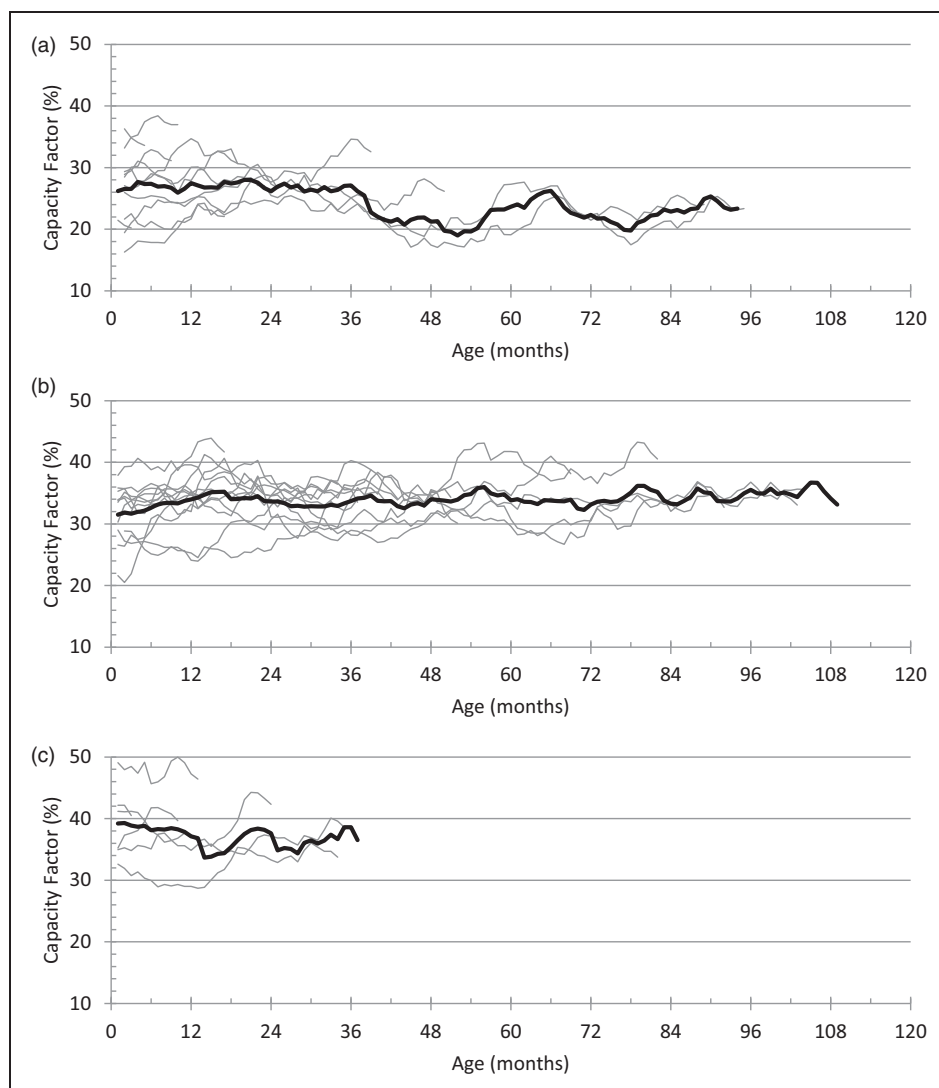
**Figure 6.** Capacity factor distribution with age for Round 1 offshore wind farms.

factors on average than the Round 1 sites. In summary, the limited data available for fully-commissioned farms indicates that the older farms are either maintaining or improving their capacity factors whilst newer developments are coming online with higher capacity factors.

Figure 8 shows the distribution of annual capacity factors, calculated from the monthly capacity factors, for all farms and for different subsets of the farms. For all farms there is virtually no change in capacity factor with age. Figure 8(b) shows that the greatest decline in capacity factor with age occurs for large onshore farms, with increased variation in the early years due to the emergence of newer, better performing farms within the data. The changes in absolute capacity factor are given in Table 6. The change in onshore capacity factor, plotted in Figure 8(b), illustrates a decrease of 0.75% per annum from an initial value of 28%. This data for large onshore wind farms indicates a greater rate of degradation than that found in Staffell and Green<sup>15</sup> which, using the same approach, deduced a degradation rate of 0.44% per annum from an initial value of 29.2% from the data used in this study for UK onshore farms. The comparison between these results from different studies

gives an indication of the likely scatter in results due to the statistical significance of the datasets that are currently available. Results in Staffell and Green<sup>15</sup> are derived from data covering all UK onshore wind farms, including those with capacities below 100 MW. The lower degradation rate in Staffell and Green<sup>15</sup> might imply that the performance of high-capacity farms declines at greater rate than that of lower capacity farms, as argued in Hughes.<sup>12</sup> It should be noted that the magnitude of the decline described in Hughes<sup>12</sup> does not seem to agree with findings in this paper or Staffell and Green.<sup>15</sup> This possible difference between the performances of farms of different capacities is an interesting and important area for further study if the performance of modern wind farms is to be understood and optimised.

As noted earlier, Round 1 offshore wind farms demonstrate a slight increase in absolute capacity factor over time, with an increase of 0.19% per year from a higher initial value of 32.8%. The Round 2 offshore farm data has also been included in Table 5 for completeness, although the value for annual change for these farms is subject to much greater uncertainty than the other values in the table, due to



**Figure 7.** Twelve-month moving average monthly capacity factors with overall average by month of operation for: (a) large onshore > 100MW, (b) offshore Round 1 and (c) offshore Round 2 wind farms.

the relatively small numbers of years of operating data that is currently available for the Round 2 sites.

It is also useful to examine the monthly average capacity factors with date rather than year of operation. This is shown in Figure 9. The effect of newer wind farms is visible from the data with increasing monthly capacity factors for Round 1 (Figure 9(b)) and Round 2 (Figure 9(c)) farms. The large onshore farms in Figure 9(a) also show an upward trend with no marked deterioration in capacity factor and the newer farms tending to operate at increasing capacity factor levels.

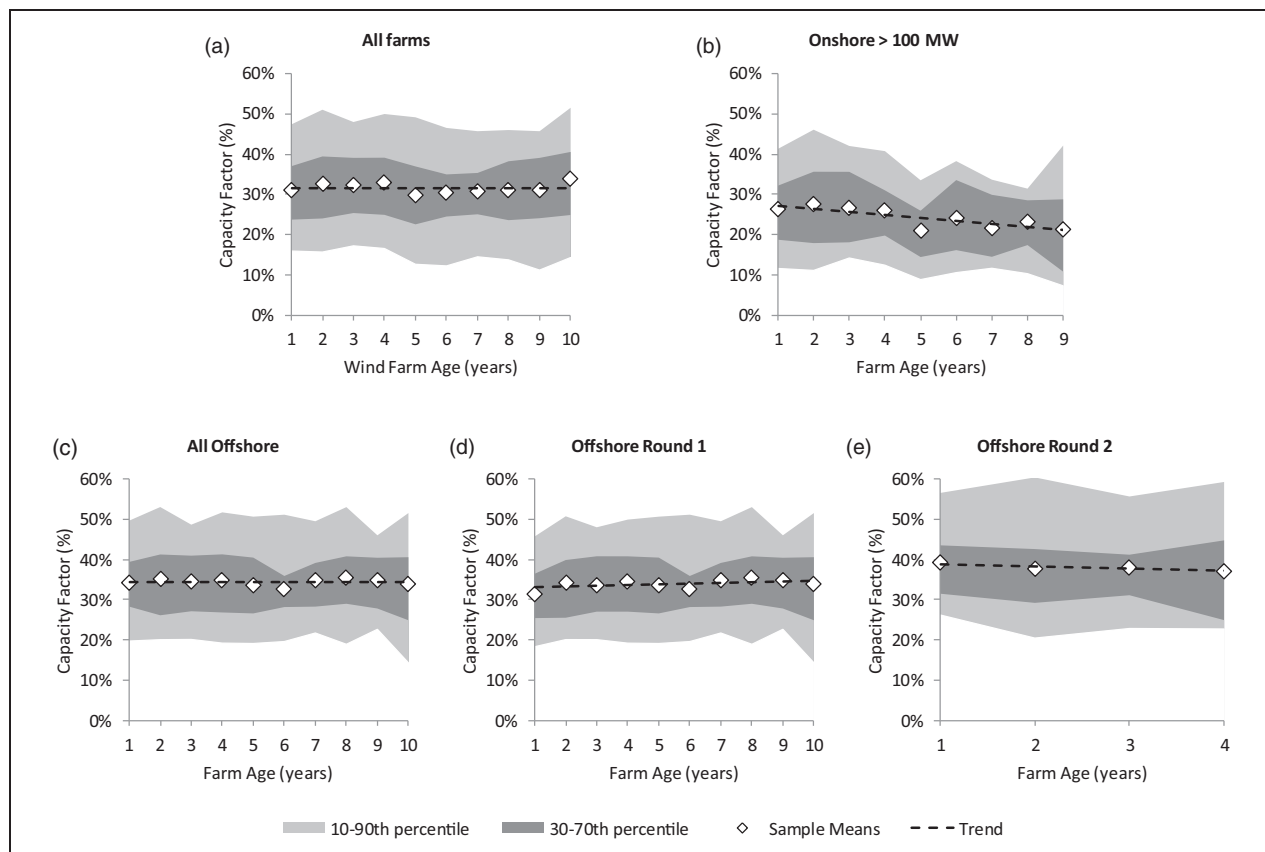
### Wind energy challenges

There are many technical, commercial and political challenges facing the growth of the offshore wind industry. Challenges associated with operations and maintenance is of particular interest to the majority

of developers. Some of these challenges are discussed in this section.

### Cost of offshore wind

Whilst progress is being made, the deployment of offshore wind farms is not growing as quickly as was envisaged a decade ago, despite significant technological advances being made during this period. The primary reason for slower than expected growth, is that offshore wind is still more expensive than conventional plant. Compared to onshore, offshore farms present greater risk to return on capital invested due to higher and more uncertain installation and O&M costs. Whilst going offshore results in improved capacity factors and higher yields, capital costs and operating costs both increase substantially, compared to onshore locations. However, this situation is changing with the recent technological improvements in the size



**Figure 8.** Annual capacity factors (averaged from monthly capacity factors) for: (a) all farms, (b) large onshore > 100 MW, (c) all offshore, (d) offshore Round 1 and (e) offshore Round 2.

**Table 6.** Changes in annual capacity factors.

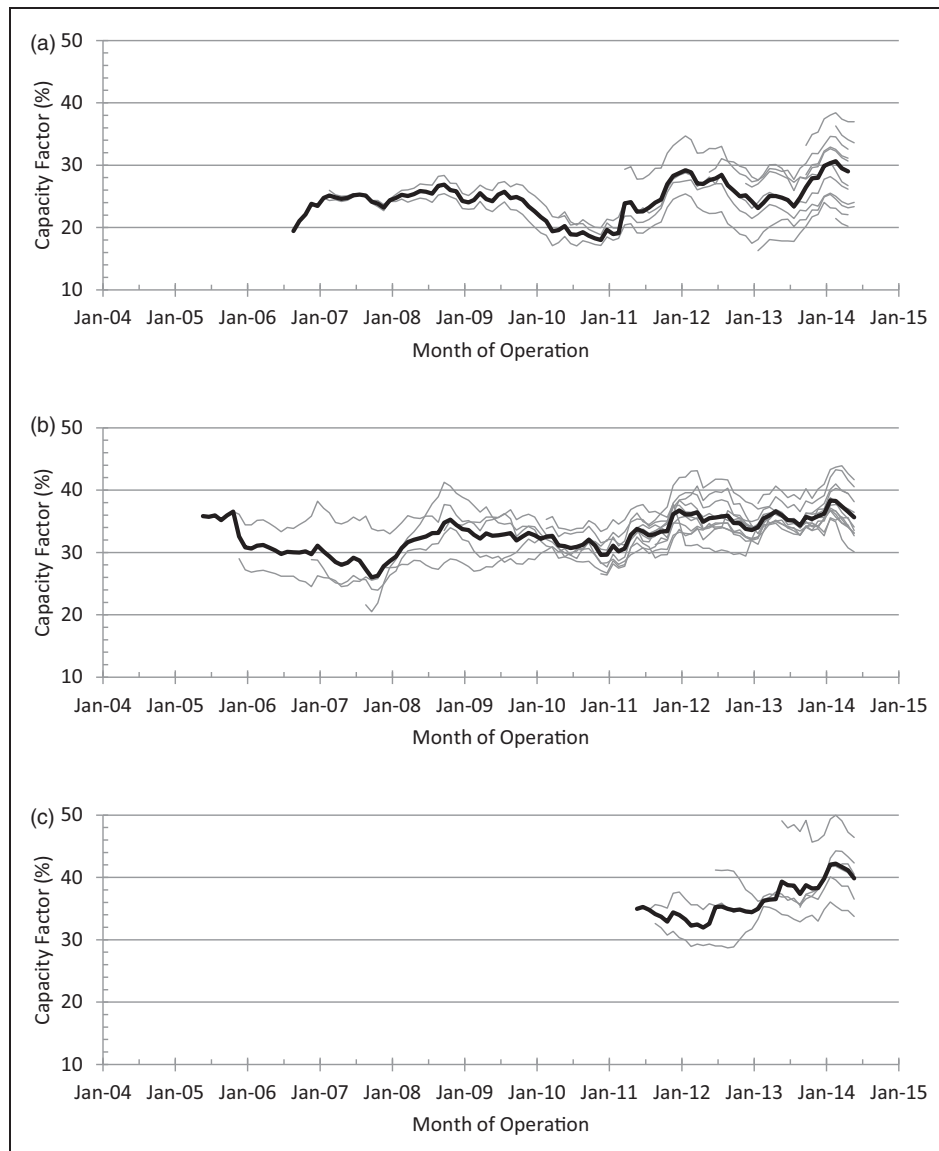
Category	Capacity factor	
	Initial	Annual change
All farms	31.6%	-0.0007%
Onshore > 100 MW	28.0%	-0.75%
All offshore	34.5%	-0.02%
Offshore Round 1	32.8%	0.19%
Offshore Round 2	39.5%	-0.59%

and design of turbine technology, the increasing numbers of offshore assets being deployed and the increase in experience gained by the operators. Evidence of this progress can be seen in the wind farm performance data described earlier. The UK offshore wind industry's plans are ambitious and so cost reduction is a subject of considerable interest.

Certain wind farms are now generating at a cost close to that of conventional plant, primarily onshore coastal sites.<sup>16</sup> The estimated cost of offshore energy varies depending on the site location and project scale; however, it is clear that offshore projects remain significantly more expensive than those that are onshore.

Contrary to expectations, the costs of offshore wind energy in the United Kingdom has increased significantly since the first commercial scale wind farms came online in the mid-2000s, with capital costs for offshore of currently around £3m/MW installed,<sup>17,18</sup> compared to around half that value 5 years ago.<sup>16,19</sup> The rise in offshore costs has been driven by both increased material prices (particularly for steel) and by more specific factors such as supply chain bottlenecks, sub-optimal reliability and the move to deeper waters.

Some of the United Kingdom's offshore projects have now achieved a stable levelised cost of energy (LCOE) of around £140/MWh.<sup>20-23</sup> Failing to significantly lowering this value to allow offshore wind to compete with conventional forms of power generation without the need for subsidies, is the most critical risk to the long-term economic sustainability of offshore wind power. The UK Renewable Energy Roadmap<sup>24</sup> states that the LCOE for offshore wind will need to reduce to around £100/MWh by 2020, if it is to gain a significant market share and achieve parity with other forms of power generation. Recent evidence from the Crown Estate<sup>20</sup> and the Offshore Wind Cost Reduction Task Force<sup>25</sup> suggests routes for achieving this goal, as the technology is scaled up, despite the move further offshore and into deeper waters.



**Figure 9.** Twelve-month moving average monthly capacity factors with overall average by date for: (a) large onshore > 100 MW, (b) offshore Round 1 and (c) offshore Round 2 wind farms.

The £100/MWh target should be realisable by 2020, but requires investment from manufacturers, developers and operators to optimise both capital expenditure (CAPEX) and operational expenditure (OPEX). Figure 10 shows the comparison of the breakdown of CAPEX and OPEX for a typical offshore wind farm, according to six recent published studies, including journal publications<sup>27</sup> and technical reports by wind industry specialists<sup>26,28</sup> and UK government experts.<sup>20,22,29</sup>

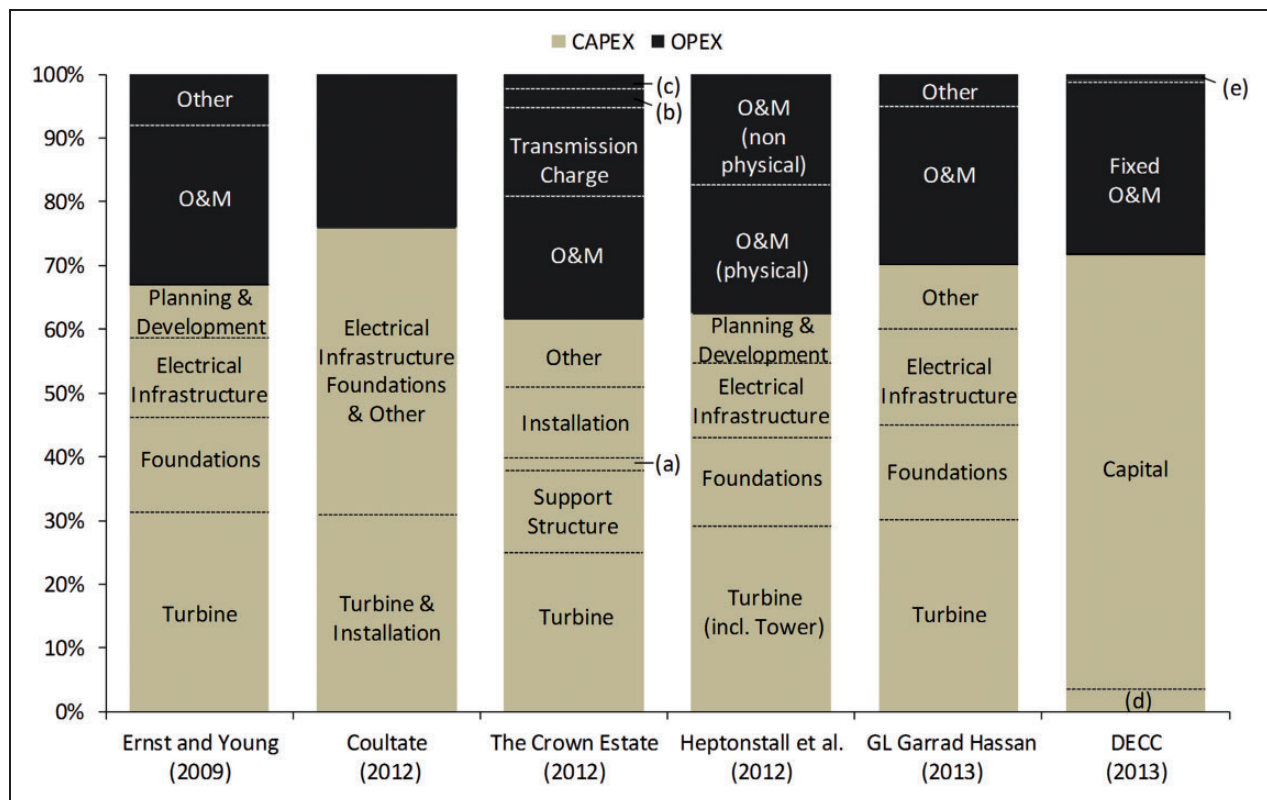
The CAPEX is taken to include all one-time expenditure associated with wind farm development, deployment and commissioning, such as<sup>30</sup>:

- the turbine costs including the transformer, transportation to the site and installation;
- the electrical connection infrastructure cost, including cables, sub-station, connection and power evacuation systems;

- the civil work cost, including the foundations, road construction and buildings;
- other capital costs, including development and engineering costs, licensing procedures, consenting and permits, SCADA (Supervisory, Control and Data Acquisition) and monitoring systems,<sup>30</sup> etc.

OPEX includes all ongoing expenditure, whether one-time or recurring, to operate and maintain the farm, measured on an annual basis. The most important OPEX costs of a wind energy project are<sup>30</sup>:

- the costs of the running of the site, including land and sub-station rental, insurance and taxes, management and administration;
- scheduled O&M activity costs, including provisions for repair and spare parts and maintenance of the electric installation;



**Figure 10.** Offshore wind LCOE breakdown by CAPEX and OPEX, based on Arwas et al.,<sup>20</sup> Ernst and Young,<sup>22</sup> Coultate,<sup>26</sup> Heptonstall et al.,<sup>27</sup> GL Garrad Hassan<sup>28</sup> and DECC.<sup>29</sup> (a) Array cables; (b) Decommissioning; (c) Seabed rent; (d) Pre-development and (e) Variable O&M.

- allowances for unplanned maintenance to repair unforeseen failures.

Although the CAPEX and OPEX component classification varies according to the reference source considered, including different levels of details, Figure 10 shows that upfront CAPEX costs recovered over the life of the wind farm account for typically 70%. Thus wind farms are capital-intensive compared to conventional fossil fuel fired technologies such as a natural gas power plant, for which principally fuel charges increase OPEX costs to typically between 40% and 70% of the LCOE.<sup>16</sup>

The work by Coultate<sup>22</sup> shows an overall OPEX for offshore wind of around 24%, which is consistent with the other cost sources cited in Figure 10. Heptonstall et al.<sup>27</sup> break the total capital cost down into the major components and separate the O&M costs into costs related to physical maintenance and costs related to non-physical services such as insurance. The contribution of the physical O&M is around 20%, representing a significant part of the total LCOE.

Most offshore projects have a design lifetime of at least 20 years. The O&M strategy employed will influence not only the annual OPEX, but also the lifetime of the farm. A balance must be struck between high levels of maintenance to ensure longevity and lower levels to reduce running costs. To date, most O&M

activities have been contracted to WT manufacturers to run in parallel with key equipment warranties, typically for the first 5 years of operation. Following the warranty period, the bigger operators might take full control of the farm assets; however, many less experienced or smaller scale operators may prefer to continue to contract for O&M to the turbine manufacturer. O&M costs are generally considered to scale with the number of turbines, as this number determines the number of personnel transfers per year and the number of replacement parts. GL Garrad Hassan examined the expected O&M costs for a 500 MW wind farm comprising 6 MW WTs, situated 55 km from shore and using an O&M strategy based around work boats with helicopter support.<sup>28</sup> The total OPEX was estimated to be around £430,000 per turbine per year, with an annual spend per turbine on O&M of around £290,000, averaged over a farm design life of 20 years.

The figures above demonstrate the importance of having a well-defined and well-managed approach to O&M activities, as a reduction in costs could dramatically affect the economic viability of large offshore wind farms and the degree to which offshore wind becomes competitive in the electricity market.

Reducing the cost of the energy produced by offshore wind projects is a major focus for the offshore wind industry<sup>20</sup> and for the UK Government.<sup>25</sup> Finding ways to reduce the cost of O&M services

and optimising asset performance have crucial roles in reducing the LCOE from offshore wind moving forward.

It is worth noting that the costs of operation are considerably lower than the costs of maintenance. Operating costs include costs associated with high-level asset management, including remote system monitoring, environmental monitoring, electricity sales, marketing and administration.

### **Maintenance optimisation**

Maintenance actions account for the majority of O&M costs incurred in large wind farms, the purpose being to achieve a desired level of performance from a component or system.

Corrective maintenance is the current O&M strategy used for existing onshore and offshore wind farms.<sup>31,32</sup> In case of a failure, a maintenance action is launched at the first opportunity to carry out the repair, resulting in an additional visit to the WT over any planned maintenance visits. Corrective maintenance practice is successfully employed onshore, with minimal interference from environmental conditions, but it is largely impractical offshore. Faults require a range of different responses from a simple inspection and restart of a WT, which might take a couple of hours, through to the replacement of an offshore substation transformer, which could take weeks or even months to implement. Difficult-to-access locations and the high cost of the specialist personnel and access equipment needed, means that offshore O&M costs have been quantified as three to five times greater than those for onshore.<sup>33,34</sup> The cost difference could potentially increase even further for next generation wind farm developments, which will be situated further offshore in higher average wind speeds and with more challenging sea conditions. Unscheduled maintenance at day-rate costs of up to 1000 per operative<sup>35</sup> has been shown to account for approximately 70% of the O&M costs.<sup>36</sup> These high figures emphasise the need for optimising the O&M strategy for unmanned offshore wind farms to reduce unexpected turbine downtime, avoid lost revenue and improve the availability, so that competitive prices for the produced electricity can be achieved.<sup>37</sup>

A Condition Based Maintenance (CBM) preventative practice can contribute significantly to minimising the offshore O&M costs, by lowering the number of inspection visits and corrective maintenance actions needed.<sup>38–42</sup> This maintenance approach involves repair or replacement of components based on their state of health and on the operating history of the particular machine in question. Advanced and reliable monitoring and analysis techniques are needed to plan CBM using data from the SCADA systems and Condition Monitoring Systems (CMS) that are already fitted to WTs.

### **Reliability**

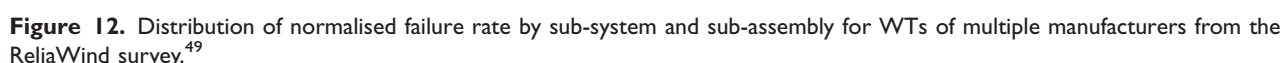
WT reliability plays a key role in the economic success of a wind farm projects. Poor reliability directly affects the project's revenue stream through both increased O&M costs and reduced availability to generate power due to turbine downtime.

Detailed measurements of offshore WT failure rates are not available in the public domain in statistically significant numbers. For this reason the available literature on reliability focuses principally on publicly available onshore data. However, operators and manufacturers are usually extremely reluctant to disclose data about reliability because the WT industry is extremely competitive and failure data concerning a manufacturer's technology has strong commercial relevance for both the procurement and operation of assets. As a result, the sources of this type of information are restricted to a few publicly available databases.<sup>43–49</sup> An increasingly strong argument exists for the WT industry to find ways of ending this restrictive practice, in favour of the collective benefit that will arise from sharing of data on improving the overall economic performance of WT assets compared to other available generating technologies. At present, the available reliability studies use data from different WT populations, types and sizes; however, the failure statistics show a considerable agreement.

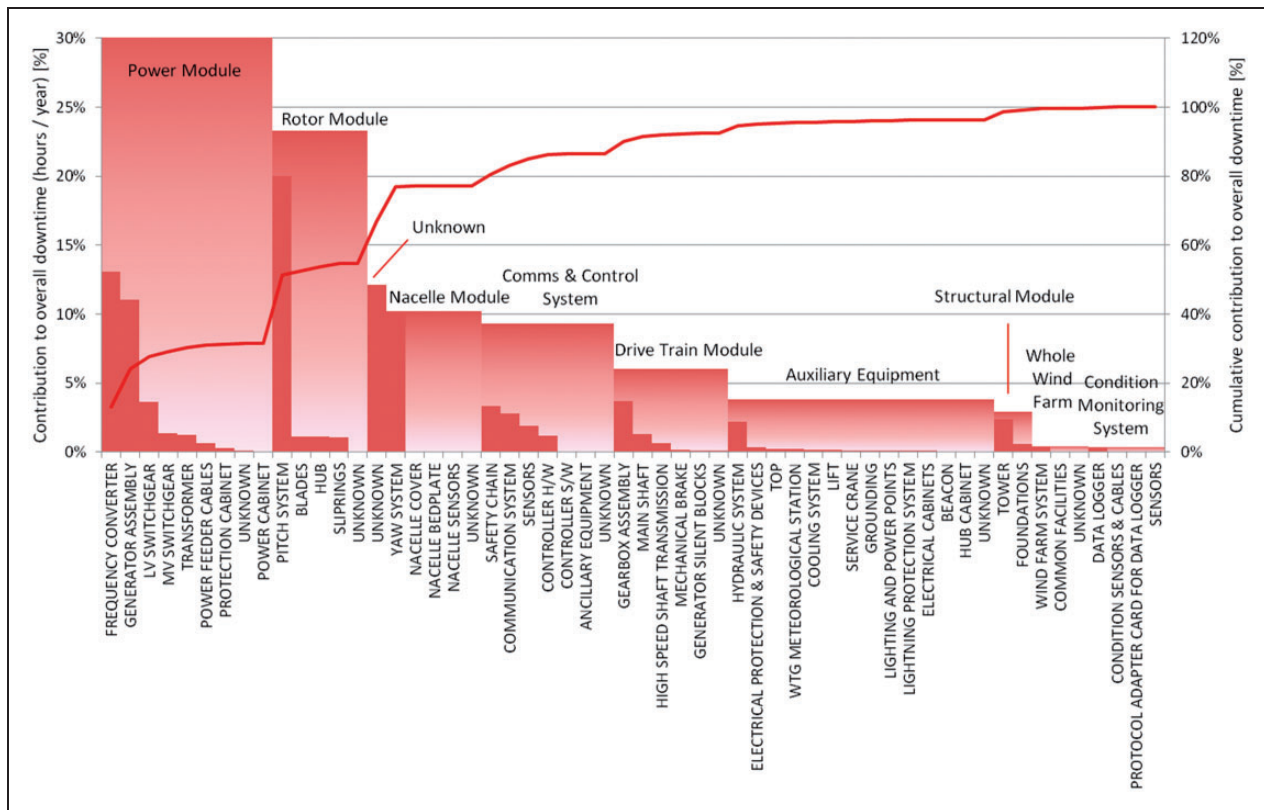
Figure 11 summarises the analysis of reliability data taken from three of the most comprehensive failure statistics datasets for onshore WTs that are currently available. These are data from the German Wissenschaftliches Mess-und Evaluierungsprogramm (WMEP),<sup>46</sup> the German Landwirtschaftskammer (LWK)<sup>47</sup> and the Ekofisk Swedish<sup>45</sup> surveys. Failure and downtime data have been categorised by WT sub-assembly. The analysis of the datasets reveals common trends and provide valuable insights into the reliability of the various onshore WT drive train components.

Figure 11 highlights that for onshore wind assets the highest failure rate sub-assemblies do not necessarily cause the most downtime. Whilst electrical sub-assemblies appear to have higher failure rates and shorter downtimes, mechanical sub-assemblies, including blades, gearbox and generator components, tend to have relatively low failure rates but very long downtimes. Similar results have been obtained by Pinar Perez et al.<sup>51</sup> where data were compared from a selection of major reliability studies from the literature, giving confidence in the validity of the information shown in Figure 11.

The WMEP, LWK and Swedish datasets have some important limitations. The data was collected during 1993–2006<sup>46,47</sup> and 1997–2005<sup>45</sup> and the majority of the turbines surveyed are much lower power than current-day turbines and use some



consists of at least 15 turbines. Figures 12 and 13 show the results of the ReliaWind study, which broke the turbine into a detailed taxonomy of sub-systems and sub-assemblies to identify critical areas of interest from >4000 onshore wind turbine years of data. It should be noted that, unlike the data



**Figure 13.** Distribution of normalised downtime by sub-system and sub-assembly for WTs of multiple manufacturers from the ReliaWind survey.<sup>49</sup>

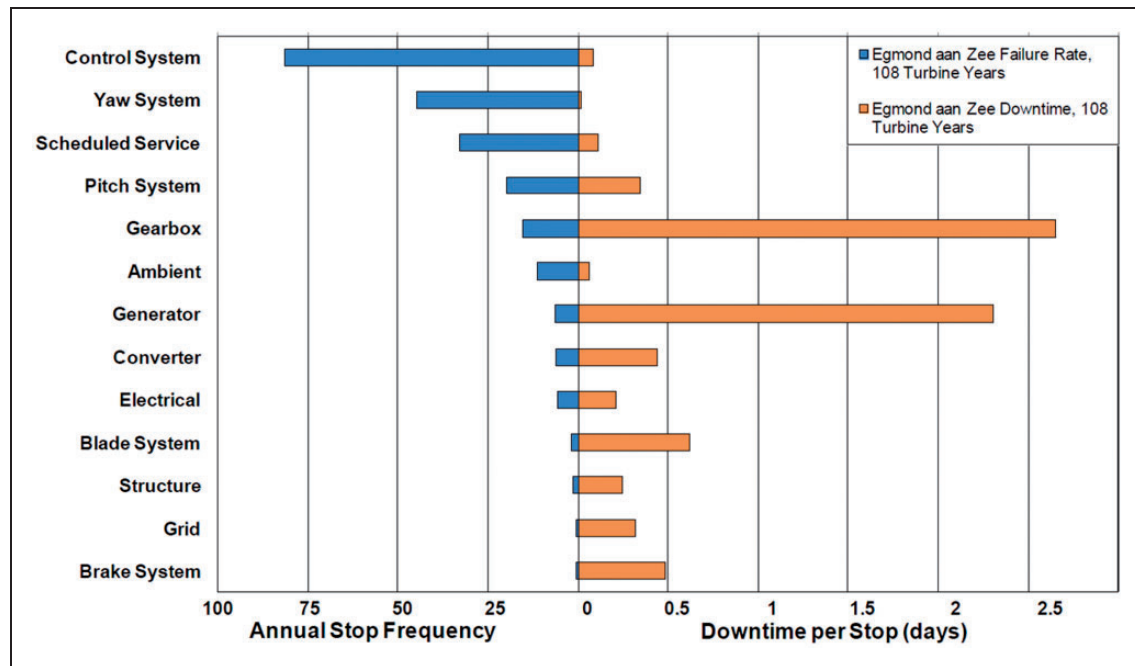
shown in Figure 11, for reasons of confidentiality the published ReliaWind results do not show the actual failure rate and downtime, only the percentage distribution. In spite of the diverse technologies and power ratings, the ReliaWind findings are broadly comparable with the WMEP, LWK and the Swedish surveys and the same failure rate trend emerges. However, the downtime trend shows much greater emphasis on the rotor and power modules, because it is believed these newer variable speed WTs have not yet experienced major gearbox, generator or blade failures to date in service.<sup>52</sup>

Faulstich et al.<sup>53</sup> showed that 75% of onshore WT failures are responsible for only about 5% of the downtime, whereas the remaining 25% of failures cause 95% of downtime. Downtime onshore is dominated by a small number of large fault types, mainly associated with gearboxes, generators and blades. These require complex and costly repair procedures. The 75% of faults causing 5% of the downtime are mostly associated with electrical faults, which, in the majority of cases, are relatively quick and easy to corrected via remote or local resets. It is worth noting that as WTs move offshore, limited accessibility, longer delays for favourable weather windows, travel and maintenance execution times will all be adversely impacted. Local resets will be associated with high costs due to difficult of accessing the turbines, which will be likely to significantly increase the downtime contribution from these sub-assemblies.

According to McMillan and Ault,<sup>33</sup> compared to onshore, the offshore downtime increase is due to two main factors: the lead time for a suitable jack-up crane vessel, cranes and other associated equipment (needed for generator, gearbox and blade), assumed to be 10 days, and the logistics time from the upload point to the wind farm, considered to be one day. For the major WT component outages, typical offshore downtime values have then been quantified as 41 days for the gearbox, 32 days for the generator, 41 days for the blade and 2 days for the electronic sub-systems replacements. The authors also emphasised that excessive wind speed conditions may further delay the maintenance actions, over and above these levels.

Crabtree<sup>54</sup> carried out a reliability analysis of 3 years of available data from the Egmond aan Zee offshore wind farm in the Netherlands. This wind farm features 36 Vestas V90-3MW WTs that are situated 10–18 km offshore and in 17–23 m water depth in the North Sea. Operational reports gave the number of stops resulting from 13 sub-assemblies. The results are summarised in Figure 14.

A direct comparison between the onshore data in Figure 11 and offshore data in Figure 14 cannot be made as stops and failures are different concepts. However, it can be seen that the overall distribution is similar, with the sub-assemblies that suffer from the higher stop and failure rates not necessarily resulting in the longest periods of downtime. Analysis of the



**Figure 14.** Stop rate and downtime data from Egmond aan Zee wind farm over 3 years.<sup>54</sup>

data shown in Figure 14 reveals that the control system dominates and causes 36% of the stops in the offshore environment, but it results in only 9.5% of the total downtime. Conversely, the gearbox and generator respectively contribute only 6.7% and 2.8% to the total stops, but account for 55% and 15% respectively of the downtime.

The adoption of appropriate design and operational strategies, choice of the most effective turbine architectures, installation of effective CMSs and the adoption of optimised O&M strategies, are all essential elements of the development work needed to reduce the cost of energy from offshore wind farms to competitive levels. Emphasis should be placed on avoiding large (expected as well as unexpected) maintenance events that require the deployment of expensive and specialized equipment. Improving the intrinsic reliability of WT assets will make a major contribution towards achieving the cost reduction targets. This will be only possible through the development of standard methodologies for reliability data collection and analysis, and through close collaboration between manufacturers, operators and research organisations.

### Condition monitoring

The need to successfully detect incipient faults before catastrophic failures occur in order to increase WT availability and reduce the cost of energy, has resulted in the development of a large number of CMSs by a range of suppliers. Modern WTs are equipped with SCADA-based and CMS-based systems for the online active remote monitoring and control of their components. This information can be used to predict, detect and diagnose faults as they emerge.

The online monitoring and fault detection are relatively new concepts in the wind industry. In recent years, efforts have been made to develop efficient and cost-effective condition monitoring techniques and signal processing methods for WTs. Several reviews have been published in the literature, including,<sup>42,55–62</sup> discussing the main condition monitoring techniques, the signal processing methods proposed for fault detection and diagnosis and their applications in wind power. The studies also provide a comprehensive explanation of the new emerging techniques currently being researched. Condition monitoring technologies from other applications that can be adapted for use in WTs have been identified as vibration analysis, oil analysis, temperature measurements, strain measurements, thermography, acoustic emissions, and electrical signals. Amongst these, vibration, temperature and oil monitoring techniques are currently the most widely used in WT applications, due to their established successes in other applications.

Some of the more recently emerging condition monitoring techniques described in the research literature<sup>42,62</sup> include ultrasonic testing which is potentially value adding for detecting early blade or tower defects, shaft torque and torsional vibration measurements for main shaft and gearbox condition monitoring, and shock pulse methods as an online approach to detecting bearing faults. To date, little work has been done in the area of prognosis models. Much of the research in this area is generic and being conducted by the aerospace community for civil and military aviation. Some specific research will be required to apply the principles of prognosis to the wind power industry.<sup>55</sup>

The goal of this section is to give an overview of the current state of the art, the main benefits, current challenges and limitations of commercial available WT SCADA-based and CMS-based systems.

SCADA systems record low frequency (typically 10-min interval) data logging of the signals from a range of instrumentation (anemometers, thermocouples, vibration transducers, oil debris detectors, etc.), which the system uses to monitor the health and supervise the operation of the WT. It is a valuable low-cost monitoring system, integrating cheap, high-volume instrumentation, information and communication technology. Chen et al.<sup>63</sup> surveyed the SCADA systems currently available in the wind industry. The survey contains information gathered over several years (from 2011 to 2014) through interaction with SCADA monitoring system and turbine manufacturers and includes information obtained from various product brochures, technical documents and personal interaction with sales and technical personnel. It shows that most of the commercially available SCADA systems are able to analyse real-time data with WT performance analysis techniques varying from tailored statistical methods to the use of artificial intelligence. One of the principal benefits of SCADA systems is that they provide an operating history of individual WTs and entire wind farms. The data recorded includes, alarms, detailed fault logs and environmental and operating conditions leading up to fault occurrences. SCADA systems are not effective in detecting incipient turbine faults and providing operators with sufficient warning for preventative action to be undertaken. The main challenges are the considerable amount of analysis that is required for the online interpretation of the large volume of data generated, and the low data rate which does not permit the in-depth analysis that is generally needed for accurate diagnosis using existing condition monitoring methodologies. Potentially, SCADA alarms can help a turbine operator to understand the health of a WT and its key components, but for large wind farms these alarms are too frequent for any meaningful online analysis to be undertaken using existing techniques.

As more and larger wind farms are being developed, the amount data collected by SCADA systems is also increasing exponentially and is becoming difficult to manage with conventional data processing methods. Therefore, the development of advanced data fusion/mining techniques and reliable physics of failure based theoretical modelling is required, in order to improve the ability of SCADA systems to detect the onset of WT failures early and accurately. Making better use of SCADA data is currently an active area of research. Several workers have recently suggested and demonstrated new approaches for rigorous analysis of the information collected by SCADA systems, to provide long-term fault detection, diagnosis and prognosis for the main WT

sub-assemblies. These include the gearbox, the converter and the pitch control system. Examples are early fault identification techniques based on artificial neural network,<sup>64</sup> calculation of damage accumulation and risk of failure using physics of failure approach<sup>65</sup> and fault prognosis procedure using a priori knowledge-based adaptive neuro-fuzzy inference system.<sup>66</sup> New signal algorithms have been developed to analyse SCADA alarms and to detect WT component faults for the pitch and converter systems<sup>67</sup> and for the gearboxes,<sup>68,69</sup> although these techniques still require some further testing and tuning. In order to overcome the difficulties associated with the handling of extremely large and complex SCADA datasets using traditional relational databases, Viharos et al.<sup>70</sup> proposed a Business Intelligence reporting prototype system for wind farm analytics which exploits the advantages of the emerging 'Big Data' tools. The paper shows how detailed operation data from a large number of wind farms can be collected and stored for future use. Validation and implementation of this type of techniques will provide operators with sufficient time to make more informed decisions concerning maintenance interventions on their machines.

In the late 1990s, the installation of WT CMSs started to be requested by some insurance companies in Europe,<sup>71</sup> following a large number of claims resulting from catastrophic gearbox failures. The drive train is one of the highest cost and most trouble prone WT sub-systems. German insurers introduced this requirement as a cost deterrent, in order to encourage an improvement in its operating life.

Today, a number of certified CMSs are available to the wind industry. The survey of commercially available WT CMSs conducted by Durham University and the UK SUPERGEN Wind Energy Technologies Consortium,<sup>72</sup> provides an up to date review of the current state of the art of available systems. The document contains information gathered over several years (between 2008 and 2014) through interaction with monitoring system and turbine manufacturers and includes information obtained from various product brochures, technical documents and personal interaction with sales and technical personnel. According to the survey, the majority of CMSs are based on high-frequency vibration monitoring of the drive train, with special focus on main bearing, gears and bearings, although some are used in combination with oil particle counters and fibre-optic strain gauges to enhance their monitoring capabilities. No commercial CMS is offered for the electrical and power electronic components and the yaw and pitch systems, beyond what is monitored by the SCADA system. This is a gap that needs to be addressed as the reliability of WT electrical systems is being increasingly recognised as a growing concern,<sup>49</sup> as the mechanical systems become more reliable. This is particularly the case for offshore installations, where deterioration in electrical

components may be accelerated in the harsh environment due to enhanced rates of corrosion and erosion.

Practical experience with CMSs in wind farms to date shows that it is problematic to achieve reliable and cost effective applications.<sup>33</sup> The use of condition monitoring techniques has been an integral part of asset management in other industries for decades. In recent years, the technology has been increasingly adopted by the wind sector. Generic techniques are well understood, but it is their adaptation for application on unmanned and remote WT power plants that is proving challenging.<sup>73</sup> There is still insufficient recognition amongst WT maintenance staff of the benefits that CMSs are able to provide.<sup>62</sup> The principal differences that distinguish WT operation from operation of other types of equipment are variable operating speed and the stochastic characteristics of the aerodynamic loads on the structure.<sup>61</sup> The non-stationary signals make it difficult to apply traditional frequency domain signal processing techniques in the development of effective algorithms for early fault detection and diagnosis.<sup>59,62</sup> The majority of commercially available WT CMSs rely on the experience of operators to successfully detect faults, by noting changes in spectra at different specific speeds and loads.<sup>74</sup>

The complexity and volume of information produced by CMSs also presents a challenge for operators for daily maintenance purposes. It is now common place for modern large onshore and offshore WTs (>1.5 MW) to be equipped with some form of CMS.<sup>62</sup> However, frequent false alarms and the costly specialist knowledge required for manual interpretation of the complex monitoring signals have discouraged WT operators from widespread adoption of these systems. Moreover, with the growth in numbers of WTs installed, especially offshore, the manual examination and comparison of the condition monitoring data will become increasingly impractical, unless simplified monitoring techniques can be developed and implemented. These will also potentially benefit from incorporating advanced data fusion and mining techniques, already successfully used in various sectors, such as manufacturing,<sup>75</sup> management<sup>76</sup> and health care.<sup>77</sup>

The principal aspects of condition monitoring technology that need to be improved to encourage increased engagement by wind farm operators are the accuracy and reliability of diagnostic decisions, including level of severity evaluation, and the development of reliable and accurate prognostic tools. In order to work effectively in the challenging offshore environment, it is evident that an increased degree of automation to deliver actionable maintenance recommendations is mandatory for cost effective and fit-for-purpose CMSs. The challenge is to achieve earlier detection, diagnosis and prognosis of faults with the necessary levels of accuracy and automation needed to reduce manpower and access costs on large-scale

offshore wind farm developments. Recent experimental research, such as Wiggelinkhuizen et al.,<sup>58</sup> Hameed et al.,<sup>60</sup> Crabtree,<sup>74</sup> Djurović et al.,<sup>78</sup> Zappalá et al.,<sup>79</sup> Zaggout et al.<sup>80</sup> and Vilchis-Rodriguez et al.,<sup>81</sup> has been focused on the development of advanced new techniques for incorporation into existing WT CMSs, to move towards this goal. The work by Zhang et al.<sup>82</sup> is an example of a data mining approach to establish models for predicting vibration excitement which has been validated by data from a damaged gearbox tested by the US Department of Energy National Renewable Energy Laboratory (NREL).

Finally, the majority of CMSs currently operate independently from the SCADA systems and therefore at present these CMS systems do not have direct and immediate access to the valuable information on operational parameters monitored and stored on the SCADA system. It is expected that ultimately, integrated autonomous CMSs and SCADA systems incorporated into WT controllers will be developed, for optimised cost and condition monitoring effectiveness.<sup>52</sup>

## Conclusions

An analysis of large UK offshore and onshore wind farm capacity factor data has been reported in this paper. The United Kingdom is the global leader in installed offshore wind farm capacity. The data used in the study covers more than 7000 turbine years of operation. It shows that:

- Offshore annual and monthly capacity factors for the whole UK portfolio are higher than onshore capacity factors. This is thought to be due to the favourable characteristics of offshore wind resource.
- The second generation UK Round 2 wind farms have benefitted from operating experience gained at the earlier Round 1 sites, allowing higher capacity factors to be achieved at the more recently installed farms.
- Overall, UK offshore farms have achieved an average monthly capacity factor of 34.5% compared to 25.6% onshore, during full operation. In isolation, Round 2 farms achieved a higher average monthly capacity factor of 38.3%.
- Peak monthly offshore capacity factors have risen to as high as 75.8% for Round 2 farms compared to 64.1% for UK large onshore farms.
- This paper shows that onshore wind farms see a decrease (by year of operation) in average annual capacity factor of 0.75% per year; however, there is clear indication that a part of this decrease is the result of the changing portfolio of wind farms. The newer farms generally demonstrate a higher capacity factor and this skews the earlier data.

A breakdown of the cost of energy generation from wind farms has highlighted the importance of reducing O&M costs from current levels. The challenges that must be overcome and the research that is currently underway to help to achieve this have been reviewed. Improved data handling and analysis techniques, integration of condition monitoring and SCADA systems and improved cost/benefit analysis from adopting condition based maintenance strategies are all identified as being important steps towards achieving this goal and have been discussed in the paper. Finally, the need for more open sharing of operating data across the wind industry and research community to accelerate the development process has been highlighted.

### Funding

The authors disclosed receipt of the following financial support for the research, authorship, and/or publication of this article:

This work was funded in part by the UK EPSRC SUPERGEN Wind Hub, EP/L014106/1, and the SUPERGEN Wind Energy Technologies programme, EP/H018662/1.

### Declaration of conflicting interests

The authors declared no potential conflicts of interest with respect to the research, authorship, and/or publication of this article.

### References

1. Directive 2009/28/EC of the European Parliament and of the Council of 23 April 2009 on the promotion of the use of energy from renewable sources and amending and subsequently repealing Directives 2001/77/EC and 2003/30/EC, L, 2009.
2. EC. Communication from the Commission to the European Parliament, The Council, the European Economic and Social Committee and the Committee of the Regions-A Policy Framework for Climate and Energy in the Period from 2020 to 2030: Commission of the European Communities 2014 Contract No.: COM(2014) 015 final.
3. Fried L, Sawyer S, Shukla S, et al. Global Wind Report Annual Market Update 2013: GWEC2014.
4. Moccia J, Arapogianni A, Wilkes J, et al. *Pure power-Wind energy targets for 2020 and 2030*. Brussels: European Wind Energy Association, 2011.
5. European Commission. *European energy and transport: Trends to 2030 (Update 2007)*. Brussels: European Commission, 2008.
6. EWEA. *Wind in power: 2014 European statistics*. Brussels: European Wind Energy Association, 2015.
7. RenewableUK. Offshore Wind, <http://www.renewableuk.com/en/renewable-energy/wind-energy/offshore-wind/index.cfm> (accessed 21 May 2014).
8. Feng Y, Tavner PJ and Long H. Early experiences with UK Round 1 wind farms. *ICE Energy* 2010; 163: 167–181.
9. DECC. *Digest of United Kingdom Energy Statistics, a national statistics publication*. London: DECC, 2009.
10. Renewable Energy Foundation, <http://www.ref.org.uk/generators/index.php> (accessed 17 November 2014).
11. Hau E. *Wind turbines: Fundamentals, technologies, application, economics*. 2nd ed. Berlin: Springer, 2006, p.530.
12. Hughes G. The performance of wind farms in the United Kingdom and Denmark. *Renewable Energy Foundation* 2012.
13. 4C Offshore. Wind Farm Database, <http://www.4coffshore.com/windfarms> (accessed 20 March 2015).
14. RenewableUK. UK Wind Energy Database, <http://www.renewableuk.com/en/renewable-energy/wind-energy/uk-wind-energy-database> (accessed 20 March 2015).
15. Staffell I and Green R. How does wind farm performance decline with age? *Renew Energy* 2014; 66: 775–786.
16. Krohn S, Morthorst PE and Awerbuch S. *The economics of wind energy*. Brussels: European Wind Energy Association, 2009.
17. Greenacre P, Gross R and Heptonstall P. *Great expectations: The cost of offshore wind in UK waters*. London: UK Energy Research Centre, 2010.
18. Mott MacDonald. *Costs of low carbon generation technologies*. London: Committee on Climate Change, 2011.
19. BWEA & Garrad Hassan. *Charting the right course: Scenarios for offshore capital costs for the next five years*. London: British Wind Energy Association, 2009.
20. Arwas P, Charlesworth D, Clark D, et al. *Offshore wind cost reduction pathways study*. London: The Crown Estate, 2012.
21. Mott MacDonald. *UK Electricity generation costs update*. London: Department of Energy and Climate Change, 2010.
22. Ernst & Young. *Cost of and financial support for offshore wind*. London: Department of Energy and Climate Change, 2009. Ernst & Young report for the Department of Energy and Climate Change, April 2009.
23. Ove Arup & Partners. Review of the generation costs and deployment potential of renewable electricity technologies in the UK, for DECC, June 2011.
24. DECC. UK Renewable Energy Roadmap, 2011.
25. Offshore Wind Cost Reduction Task Force. Offshore Wind Cost Reduction Task Force Report. June 2012.
26. Coultate J. Understanding costs for large wind-turbine drivetrains. *Wind Power Engineering and Development*, 2012.
27. Heptonstall P, Gross R, Greenacre P, et al. The cost of offshore wind: Understanding the past and projecting the future. *Energy Policy* 2012; 41: 815–821.
28. GL Garrad Hassan. Offshore wind operations and maintenance opportunities in Scotland. Scottish Enterprise, 2013.
29. DECC. Electricity Generation Costs, 2013.
30. Blanco M. The economics of wind energy. *Renew Sustain Energy Rev* 2009; 13: 1372–1382.
31. GL Garrad Hassan. A guide to UK offshore wind operations and maintenance. Scottish Enterprise and The Crown Estate, 2013.
32. Karyotakis A. *On the optimisation of operation and maintenance strategies for offshore wind farms*. PhD Thesis, University College London, UK, 2011.
33. McMillan D and Ault GW. Quantification of condition monitoring benefit for offshore wind turbines. *Wind Eng* 2007; 31: 267–285.

34. Musial W and Ram B. Large-scale offshore wind power in the United States: Assessment of opportunities and barriers NREL2010. Report No.: 9781234076177 Contract No.: No. TP-500-40745.
35. Nilsson J and Bertling L. Maintenance management of wind power systems using condition monitoring systems - Life cycle cost analysis for two case studies. *IEEE Trans Energy Convers* 2007; 22: 223–229.
36. Tavner PJ, Spinato F, Van Bussel GJW, et al. Reliability of different wind turbine concepts with relevance to offshore application. In: *Proceedings of the scientific track of the European wind energy association conference*, Brussels, Belgium, 31 March to 3 April 2008.
37. Sørensen JD. Framework for risk-based planning of operation and maintenance for offshore wind turbines. *Wind Energy* 2009; 12: 493–506.
38. Andrawus JA, Watson J, Kishk M, et al. The selection of a suitable maintenance strategy for wind turbines. *Wind Eng* 2006; 30: 471–486.
39. McMillan D and Ault GW. Condition monitoring benefit for onshore wind turbines: Sensitivity to operational parameters. *IET Renew Power Gen* 2008; 2: 60–72.
40. Byon E and Ding Y. Season-dependent condition-based maintenance for a wind turbine using a partially observed Markov decision process. *IEEE Trans Power Syst* 2010; 25: 1823–1834.
41. Zhigang T, Tongdan J, Wu B, et al. Condition based maintenance optimization for wind power generation systems under continuous monitoring. *Renew Energy* 2011; 36: 1502–1509.
42. Garcia Marquez FP, Tobias AM, Pinar Perez JM, et al. Condition monitoring of wind turbines: Techniques and methods. *Renew Energy* 2012; 46: 169–178.
43. Windstats: [www.windstats.com](http://www.windstats.com).
44. Tavner PJ, van Bussel GJW and Spinato F. Machine and converter reliabilities in wind turbines. In: *IEE International conference on PEMD*, Dublin, Ireland, 2006.
45. Ribrant J and Bertling LM. Survey of failures in wind power systems with focus on Swedish wind power plants during 1997–2005. *IEEE Trans Energy Convers* 2007; 22: 167–173.
46. Hahn B, Durstewitz M and Rohrig K. Reliability of wind turbines, experience of 15 years with 1,500 WTs. *Wind Energy*. In: *Proceedings of the Euromech colloquium 464b 2005*, Oldenburg, Germany, 2007, pp.329–332.
47. Eggersgluß W. Wind Energie IX-XIV, Praxis-Ergebnisse 1995–2004. Landwirtschaftskammer Schleswig-Holstein, Osterrönfeld, Germany, 1995–2004.
48. Echavarria E, Hahn B, van Bussel GJW, et al. Reliability of wind turbine technology through time. *ASME Trans J Solar Energy Eng* 2008; 130: 031005–1.
49. Wilkinson M, Hendriks B, Spinato F, et al. Methodology and results of the ReliaWind reliability field study. In: *Proceedings of the scientific track of the European Wind Energy Association conference*, Warsaw, Poland, 2010.
50. Tavner P, Faulstich S, Hahn B, et al. Reliability & availability of wind turbine electrical & electronic components. *EPE J* 2010; 20: 45–50.
51. Pinar Pérez JM, García Márquez FP, Tobias A, et al. Wind turbine reliability analysis. *Renew Sustain Energy Rev* 2013; 23: 463–472.
52. Tavner PJ. *Offshore wind turbines: Reliability, availability and maintenance*. 1st ed. London: The Institution of Engineering and Technology, 2012.
53. Faulstich S, Hahn B and Tavner PJ. Wind turbine downtime and its importance for offshore deployment. *Wind Energy* 2011; 14: 327–337.
54. Crabtree CJ. Operational and reliability analysis of offshore wind farms. In: *Proceedings of the scientific track of the European Wind Energy Association conference*, Copenhagen, Denmark, 16–19 April 2009.
55. Hyers RW, McGowan JG, Sullivan KL, et al. Condition monitoring and prognosis of utility scale wind turbines. *Energy Mater: Mater Sci Eng Energy Syst* 2006; 1: 187–203.
56. Amirat Y, Benbouzid MEH, Bensaker B, et al. Condition monitoring and fault diagnosis in wind energy conversion systems: A review. In: *Proceedings of IEEE international electric machines & drives conference*, Antalya, Turkey, 3–5 May 2007.
57. Wilkinson MR, Spinato F and Tavner PJ. Condition monitoring of generators & other subassemblies in wind turbine drive trains. In: *Proceedings of 2007 IEEE international symposium on diagnostics for electric machines, power electronics and drives (SDMPED 2007)*, Cracow, Poland, 2007.
58. Wiggelinkhuizen E, Verbruggen T, Braam H, et al. Assessment of condition monitoring techniques for offshore wind farms. *Trans ASME J Sol Energy Eng* 2008; 130: 9.
59. Amirat Y, Benbouzid MEH, Al-Ahmar E, et al. A brief status on condition monitoring and fault diagnosis in wind energy conversion systems. *Renew Sustain Energy Rev* 2009; 13: 2629–2636.
60. Hameed Z, Hong YS, Cho YM, et al. Condition monitoring and fault detection of wind turbines and related algorithms: A review. *Renew Sustain Energy Rev* 2009; 13: 1–39.
61. Lu B, Li Y, Wu X, et al. A review of recent advances in wind turbine condition monitoring and fault diagnosis. In: *Proceedings of 2009 IEEE symposium on power electronics and machines in wind applications. PEMWA 2009*, Lincoln, Nebraska, 2009.
62. Yang W, Tavner PJ, Crabtree CJ, et al. Wind turbine condition monitoring: Technical and commercial challenges. *Wind Energy* 2014; 17: 673–693.
63. Chen B, Zappalá D, Crabtree CJ, et al. Survey of commercially available SCADA data analysis tools for wind turbine health monitoring. Technical Report, Durham University and the SUPERGEN Wind Energy Technologies Consortium, 2014.
64. Zaher A, McArthur SDJ, Infield DG, et al. Online wind turbine fault detection through automated SCADA data analysis. *Wind Energy* 2009; 12: 574–593.
65. Gray CS and Watson SJ. Physics of failure approach to wind turbine condition based maintenance. *Wind Energy* 2010; 13: 395–405.
66. Chen B, Matthews PC and Tavner PJ. Wind turbine pitch faults prognosis using a-priori knowledge-based ANFIS. *Exp Syst Appl* 2013; 40: 6863–6876.
67. Qiu Y, Feng Y, Tavner PJ, et al. Wind turbine SCADA alarm analysis for improving reliability. *Wind Energy* 2012; 15: 951–966.
68. Kim K, Parthasarathy G, Uluyol O, et al. Use of SCADA data for failure detection in wind turbines.

- In: *The 2011 energy sustainability conference and fuel cell conference*, Washington, DC, 7–10 August 2011.
69. Feng Y, Qiu Y, Crabtree CJ, et al. Monitoring wind turbine gearboxes. *Wind Energy* 2013; 16: 728–740.
  70. Viharos ZJ, Sidló CI, Benczúr AA, et al. Big data initiative as IT solution for improved operation and maintenance of wind turbines. In: *Proceedings of the scientific track of the European Wind Energy Association conference*, Vienna, Austria, 2013.
  71. Germanischer Lloyd. *Guideline for the certification of condition monitoring systems for wind turbines*. Hamburg, Germany: Germanischer Lloyd, 2007.
  72. Crabtree CJ, Zappalá D and Tavner PJ. *Survey of commercially available condition monitoring systems for wind turbines*. Technical Report: Durham University and the SUPERGEN Wind Energy Technologies Consortium, 2014.
  73. Christensen JJ and Andersson C. Remote condition monitoring of Vestas turbines. In: *Proceedings of the European Wind Energy Association conference*, Marseille, France, 2009.
  74. Crabtree CJ. *Condition monitoring techniques for wind turbines*. PhD Thesis, Durham University, UK, 2011.
  75. Harding JA, Shahbaz M, Srinivas S, et al. Data mining in manufacturing: A review. *J Manuf Sci Eng* 2006; 128: 969–976.
  76. Berry MJA and Linoff GS. *Data mining techniques: For marketing, sales, and customer relationship management*. 2nd ed. New York: Wiley, 2004.
  77. Shah S, Kusiak A and O'Donnell M. Patient-recognition data-mining model for BCG-plus interferon immunotherapy bladder cancer treatment. *Comput Biol Med* 2006; 36: 634–655.
  78. Djurović S, Crabtree CJ, Tavner PJ, et al. Condition monitoring of wind turbine induction generators with rotor electrical asymmetry. *IET Renew Power Gen* 2012; 6: 207–216.
  79. Zappalá D, Tavner PJ, Crabtree CJ, et al. Side-band algorithm for automatic wind turbine gearbox fault detection and diagnosis. *IET Renew Power Gen* 2014; 8: 380–389.
  80. Zaggout MN, Tavner PJ, Crabtree CJ, et al. Detection of rotor electrical asymmetry in wind turbine doubly-fed induction generators. *IET Renew Power Gen* 2014; 8: 878–886.
  81. Vilchis-Rodriguez DS, Djurović S and Smith AC. Wound rotor induction generator bearing fault modelling and detection using stator current analysis. *IET Renew Power Gen* 2013; 7: 330–340.
  82. Zhang Z, Verma A and Kusiak A. Fault analysis and condition monitoring of the wind turbine gearbox. *IEEE Trans Energy Convers* 2012; 27.



**Deliverable D4.2:  
A proposed standard for the reporting of  
operational performance and reliability  
data from wind farms**

Donatella Zappalá  
12<sup>th</sup> January 2018

Revision: 02



# 1. Introduction

The first part of this report presents an update of the preliminary results on the performance of UK wind farms published in [1]. A wider and more statistically significant dataset is presented and analysed in this report. This report aims at providing a standard approach for the reporting of operational performance of wind farm. Capacity factor data from UK offshore wind farms is presented, providing an insight into the current performance of large Round 2 offshore wind farms compared to the earlier Round 1 farms and to onshore farms. The most up-to-date data analysis confirms the trend shown by the initial results in [1], with the improvement of the performance of new farms coming online which raise the average capacity factor. It is suggested that the industry is applying the learning from early experiences to achieve better performances at the more recently installed farms.

The second part of this report presents recent and current efforts in the wind industry towards the development of standard methodologies for offshore wind reliability data collection and analysis. In particular, it provides a brief review of:

- the results of the EU FP7 Reliawind project on the definition of a common wind turbine taxonomy and a universal database structure for storing downtime events from multiple manufacturers' turbines;
- the ongoing SPARTA (System Performance, Availability and Reliability Trend Analysis) project which represents the first attempt in the UK wind industry to create a bespoke data exchange platform for sharing anonymised offshore performance and maintenance data.

# 2. Performance of UK wind farms

By the end of 2016, there were 29 fully operational offshore wind farms in the UK, with a total capacity of 5,095 MW, with construction activity commencing on a further 5.3 GW of new capacity [2]. Figure 1 shows the UK offshore wind portfolio.

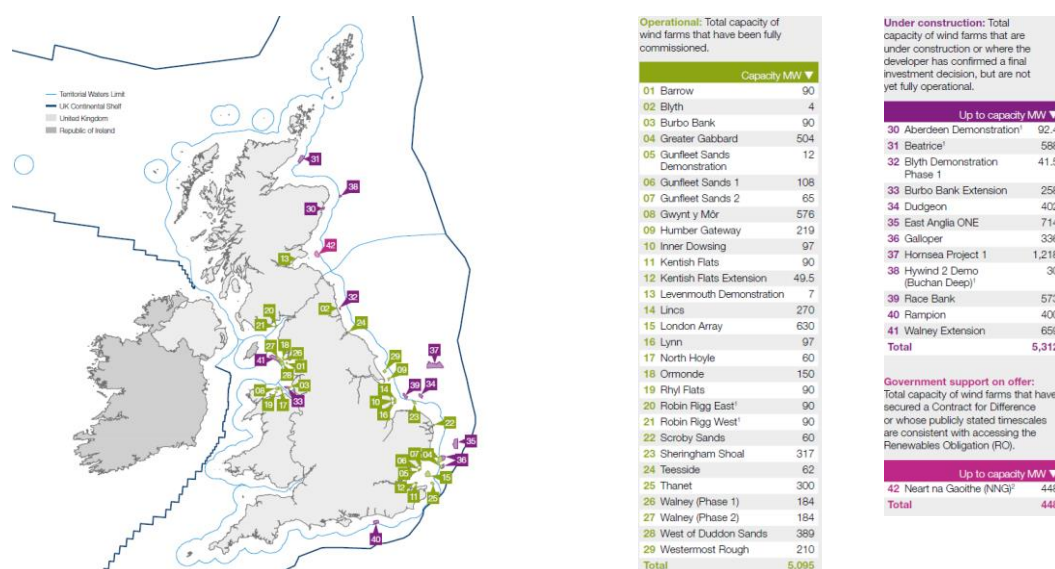


Figure 1: UK offshore wind project pipeline – April 2017 [2].

This report analyses the performance of the 26 largest offshore farms with capacities ranging from 60 MW to 630 MW listed in Table 1. No continuous data is available from the remaining three smaller test farms, i.e. Blyth, Gunfleet Sands Demonstration and Levenmouth Demonstration.

**Table 1: UK offshore wind farms. Data collated by the Renewable Energy Foundation (REF), covering the 12-year period from July 2004 to November 2016.**

Wind Farm	Turbine Manufacturer	Turbine Capacity (MW)	Number of Turbines	Farm Capacity (MW)	Award Round	Capacity Factor* (%)	Reported Months
Barrow	Vestas	3.0	30	90.0	1	35.8	129
Burbo Bank	Siemens	3.6	25	90.0	1	35.1	113
Gunfleet Sands I	Siemens	3.6	30	108.0	1	35.1	85
Lynn	Siemens	3.6	27	97.2	1	34.1	103
Inner Dowsing	Siemens	3.6	27	97.2	1	34.4	101
Kentish Flats	Vestas	3.0	30	90.0	1	31.6	135
North Hoyle	Vestas	2.0	30	60.0	1	34.1	155
Ormonde	REpower	5.0	30	150.0	1	40.3	63
Rhyl Flats	Siemens	3.6	25	90.0	1	34.4	88
Robin Rigg (East)	Vestas	3.0	30	90.0	1	34.9	79
Robin Rigg (West)	Vestas	3.0	30	90.0	1	34.8	86
Scroby Sands	Vestas	2.0	30	60.0	1	30.7	148
Teesside	Siemens	2.3	27	62.1	1	32.3	40
London Array	Siemens	3.6	175	630.0	2	42.1	48
Greater Gabbard	Siemens	3.6	140	504.0	2	37.1	68
Thanet	Vestas	3.0	100	300.0	2	33.0	76
Sheringham Shoal	Siemens	3.6	88	316.8	2	36.6	62
Walney 2	Siemens	3.6	51	183.6	2	43.6	59
Walney 1	Siemens	3.6	51	183.6	2	40.6	70
Lincs	Siemens	3.6	75	270.0	2	36.9	51
Gunfleet Sands II	Siemens	3.6	18	64.8	2	36.5	88
West of Duddon Sands	Siemens	3.6	108	388.8	2	41.6	32
Humber Gateway	Vestas	3.0	73	219.0	2	42.8	20
Gwynt y Mor	Siemens	3.6	160	576.0	2	22.3	36
Westermest Rough	Siemens	6	35	210	2	39.8	26
Kentish Flats Extension	Vestas	3.3	15	49.5	2.5	44.6	14
<b>Total</b>			<b>1,460</b>	<b>5,070.6</b>			

\* Average of all available rolling 12 months periods in the currently available data for the site

Monthly capacity factor data for each of the wind farms in Table 1 has been collated by the Renewable Energy Foundation and is publicly available via their online database [3]. To provide a reasonable comparison between onshore and offshore wind farms, 12 onshore wind farms with capacities greater than 100 MW are considered. The data available from the Renewable Energy Foundation [3] is summarised in Table 2. Table 3 summarises the data presented in this report against preliminary results published in [1] and the previous study of UK Round 1 offshore sites by Feng et al. [4].

**Table 2: UK onshore wind farms with capacity greater than 100 MW. Data collated by the Renewable Energy Foundation (REF), covering the 11-year period from October 2005 to October 2016.**

Wind Farm	Turbine Manufacturer	Turbine Capacity (MW)	Number of Turbines	Farm Capacity (MW)	Capacity Factor* (%)	Reported Months
Whitelee	Siemens	2.3	140	322.0	17.4	105
Whitelee Extension	Alstom	2.9	75	217.0	15.9	51
Griffin	Siemens	2.3	68	156.4	18.4	64
Fallago Rig	Vestas	3	48	144.0	25.2	44
Harestanes	Gamesa	2	68	136.0	17.1	38
Crystal Rig II	Siemens	2.3	60	138.0	27.3	82
Clyde (South)	Siemens	2.3	56	128.8	27.2	63
Black Law	Siemens	2.3	54	124.2	15.9	140
Arecleoch	Gamesa	2	60	120.0	14.2	64
Hadyard Hill	Bonus	2.3	52	119.6	19.6	129
Clyde (Central)	Siemens	2.3	49	112.7	28.6	58
Clyde (North)	Siemens	2.3	47	108.1	31.6	50
<b>Total</b>			<b>777</b>	<b>1,826.8</b>		

\* Average of all available rolling 12 months periods in the currently available data for the site

**Table 3: Capacity factor data population for this report and previous studies.**

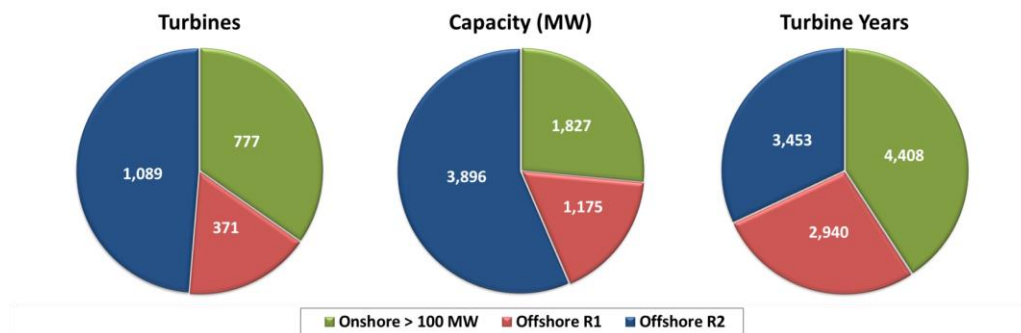
	Wind Farm	Turbines	Capacity (MW)	Turbine years
Offshore	Feng et al. [4], , July 2004 - December 2007	120	300	270
	Crabtree et al. [1], July 2004 - June 2014	1,177	4,016	4,026
	<b>This report, July 2004 - November 2016</b>	<b>1,460</b>	<b>5,071</b>	<b>7,731</b>
Onshore > 100 MW	Crabtree et al. [1], October 2005 - June 2014	777	1,827	3,000
	<b>This report, October 2005 - October 2016</b>	<b>777</b>	<b>1,827</b>	<b>4,943</b>

Similarly to the approach adopted in [1], all data before the farm full commissioning dates was discarded in order to remove early low farm-level capacity factor data reported during the initial operating periods when only a small number of turbines were generating and many more were still under construction. The resulting data set is summarised in Table 4 which shows the number of points included in the original and cleaned data sets against those used in the initial study [1]. Approximately 86% of the original data was retained. No wind farms included in this study were re-powered during the reporting period and any fluctuations in capacity should be considered to be

part of normal farm operation. The wind farm filtered capacity factor data used in this study covers more than 10000 wind turbine years and is much more extensive than that presented in [1], where less than 6000 filtered turbine years were analysed. In particular, the filtered offshore data is now more statistically significant. Figure 2 summarises the wind farm population and the cleaned turbine years analysed in this report.

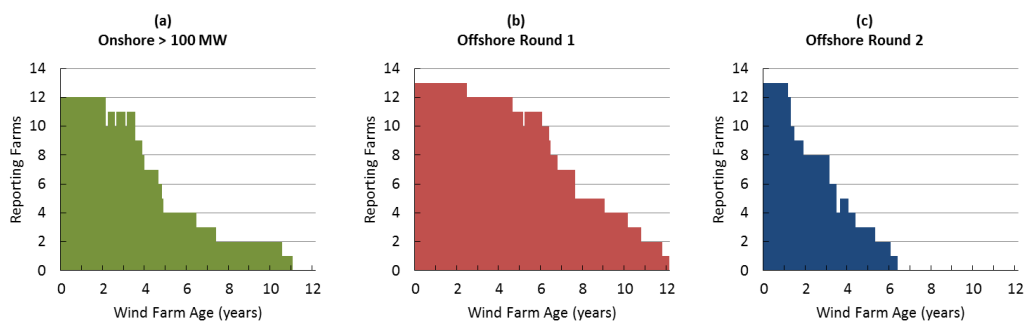
**Table 4: Summary of original and cleaned data for this report and the initial study [1].**

Wind Farm		Raw turbine years	Filtered turbine years	Percentage turbine years retained
Offshore	Crabtree et al. [1]	4,026	3,116	77.4 %
	<b>This report</b>	<b>7,731</b>	<b>6,393</b>	<b>82.7 %</b>
Onshore > 100 MW	Crabtree et al. [1]	3,000	2,597	86.6 %
	<b>This report</b>	<b>4,943</b>	<b>4,408</b>	<b>89.2 %</b>

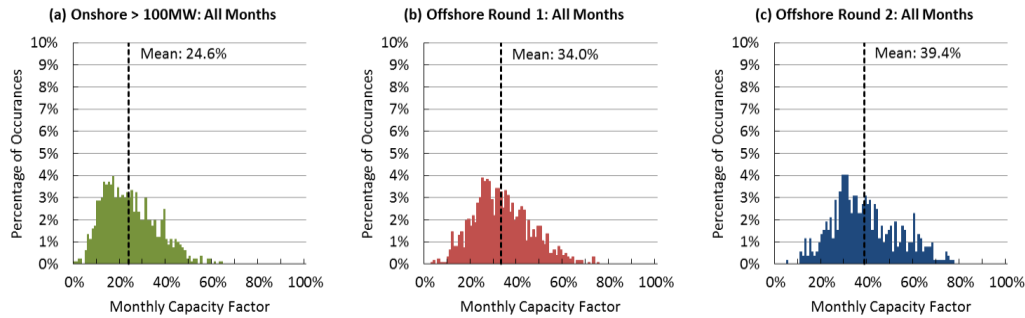


**Figure 2: Cleaned capacity factor data population.**

Figure 3 shows the number of reporting wind farms with farm age from date of commissioning split into Onshore >100MW, offshore Round 1 and Round 2 categories. The most comprehensive historical data is available for Round 1 offshore wind farms, with some farms now having completed twelve full years of operation, against the 10 years presented in [1]. Figure 4 summarises the performance of turbines for each of the three wind farm categories, over their lives to date. Unlike the preliminary results shown in [1], the data in Figure 4(c) is now as statistically significant as the other categories and shows a distribution similar to the other two datasets.



**Figure 3: Number of reporting wind farms with age of operation from commissioning for (a) large onshore, (b) offshore Round 1 and (c) offshore Round 2 wind farms.**



**Figure 4: Histogram of capacity factors normalised to the total number of reported months for (a) large onshore, (b) offshore Round 1 and (c) offshore Round 2 wind farms.**

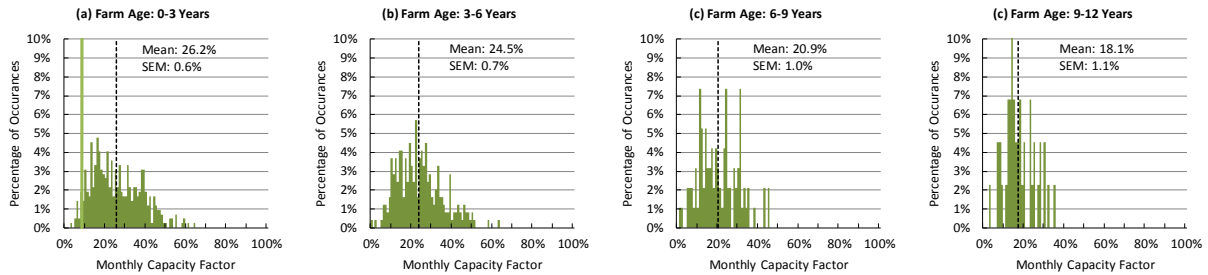
Table 5 summarises the average monthly capacity factors across the UK's different wind farm categories as shown in Figure 4 and compare them against preliminary results published in [1]. Round 2 offshore farms achieve the best performance with an average monthly capacity factor of 39.4% and a peak of 77.8%, both higher than those observed when analysing the smaller farm population in [1]. Round 1 farms show a capacity factor of 34%, again higher than that presented in [1]. Large onshore farms achieve a capacity factor of 24.6%, slightly lower than that presented in [1]. This could result from a number of factors, including the effect the ageing asset, which cannot be understood directly from the available data. As a result of the larger number of reported months available in this study, the standard errors on the means (SEM) are equal or lower than those shown in [1], in all cases being 0.6 % or below. The lower SEM values for the Onshore>100 MW, Round 2 and All Offshore data sets suggest a higher reliability of the calculated means. The Round 2 data set is now more statistically significant than that analysed in [1] and this results in a greater precision in the mean estimate.

**Table 5: Summary of capacity factors for UK large onshore and offshore wind farm fleets for this report and the initial study [1].**

Category		Average Monthly Capacity Factor	Standard Error on the Mean (SEM)	Peak Monthly Capacity Factor
Onshore > 100MW	Crabtree et al. [1]	25.6%	0.6%	64.1%
	<b>This report</b>	<b>24.6%</b>	<b>0.4%</b>	<b>64.1%</b>
Round 1 Offshore	Crabtree et al. [1]	33.6%	0.4%	75.7%
	<b>This report</b>	<b>34.0%</b>	<b>0.4%</b>	<b>75.7%</b>
Round 2 Offshore	Crabtree et al. [1]	38.3%	1.0%	75.8%
	<b>This report</b>	<b>39.4%</b>	<b>0.6%</b>	<b>77.8%</b>
All Offshore	Crabtree et al. [1]	34.5%	0.4%	75.8%
	<b>This report</b>	<b>35.6%</b>	<b>0.3%</b>	<b>77.8%</b>

For each of the three wind farm categories, Figures 5-7 show the distributions of capacity factor broken down by turbine age. Tables 6-8 summarise the capacity factor population size, mean and SEM with age and compare them against preliminary results published in [1]. Figure 5 and Table 6 show a decrease of the average capacity factor with time onshore, similarly to [1]. In the case of Round 1 offshore farms (Figure 6 and Table 7), the average capacity factor increases with age within the first six years, similarly to [1], and then it slightly decreases for older farms. The causes of this

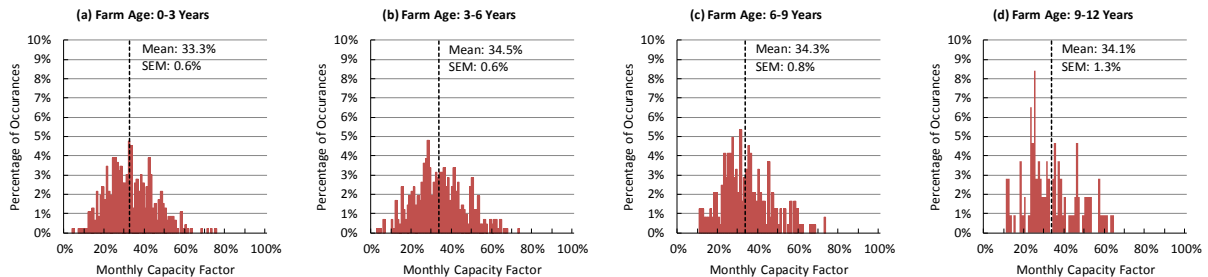
change in capacity factor distribution cannot be directly inferred from the data as capacity factors depend on a number of variables including wind speed, turbine availability and curtailment, for example. Further study is required to fully understand this initial increase of the capacity factor of Round 1 offshore farms despite aging assets. Unlike the previous study [1], the available capacity factor data population allows now the analysis of the Round 2 farm performance up to year six. The data in Figure 7 and Table 8 suggest a slight decrease of the performance over time, with average monthly capacity factors over three year periods decreasing from 40.3% to 37.2%. The overall downtrend results can be compared with findings from [5] and [6] which state that turbine performance is decreasing over time as machines age.



**Figure 5: Capacity factor distribution with age for onshore wind farms > 100 MW.**

**Table 6: Capacity factor population size, mean and SEM with age for onshore wind farms > 100 MW for this and the initial study [1].**

Farm Age (Years)	Capacity Factor Data Population	Population Size	Mean (%)	SEM (%)
0-3	Crabtree et al. [1]	301	26.8	0.7
	<b>This report</b>	<b>420</b>	<b>26.2</b>	<b>0.6</b>
3-6	Crabtree et al. [1]	109	23.9	1.1
	<b>This report</b>	<b>245</b>	<b>24.5</b>	<b>0.7</b>
6-9	Crabtree et al. [1]	60	22.2	1.4
	<b>This report</b>	<b>95</b>	<b>20.9</b>	<b>1.0</b>
9-12	Crabtree et al. [1]	N/A	N/A	N/A
	<b>This report</b>	<b>44</b>	<b>18.1</b>	<b>1.1</b>

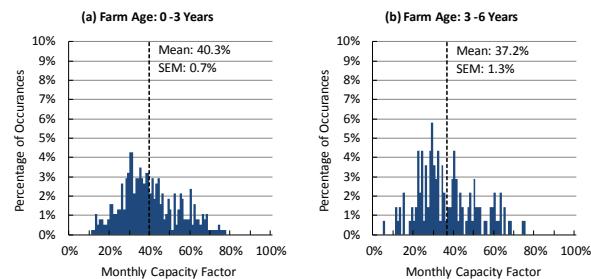


**Figure 6: Capacity factor distribution with age for Round 1 offshore wind farms.**

**Table 7: Capacity factor population size, mean and SEM with age for offshore R1 wind farms for this and the initial study [1].**

Farm Age (Years)	Capacity Factor Data Population	Population Size	Mean (%)	SEM (%)
0-3	Crabtree et al. [1]	424	33.1	0.6
	<b>This report</b>	<b>462</b>	<b>33.3</b>	<b>0.6</b>
3-6	Crabtree et al. [1]	286	33.8	0.7
	<b>This report</b>	<b>415</b>	<b>34.5</b>	<b>0.6</b>
6-9	Crabtree et al. [1]	131	35.0	1.0
	<b>This report</b>	<b>242</b>	<b>34.3</b>	<b>0.8</b>
9-12	Crabtree et al. [1]	NSS*	NSS*	NSS*
	<b>This report</b>	<b>107</b>	<b>34.1</b>	<b>1.3</b>

\*NSS = Not Statistically Significant



**Figure 7: Capacity factor distribution with age for Round 2 offshore wind farms.**

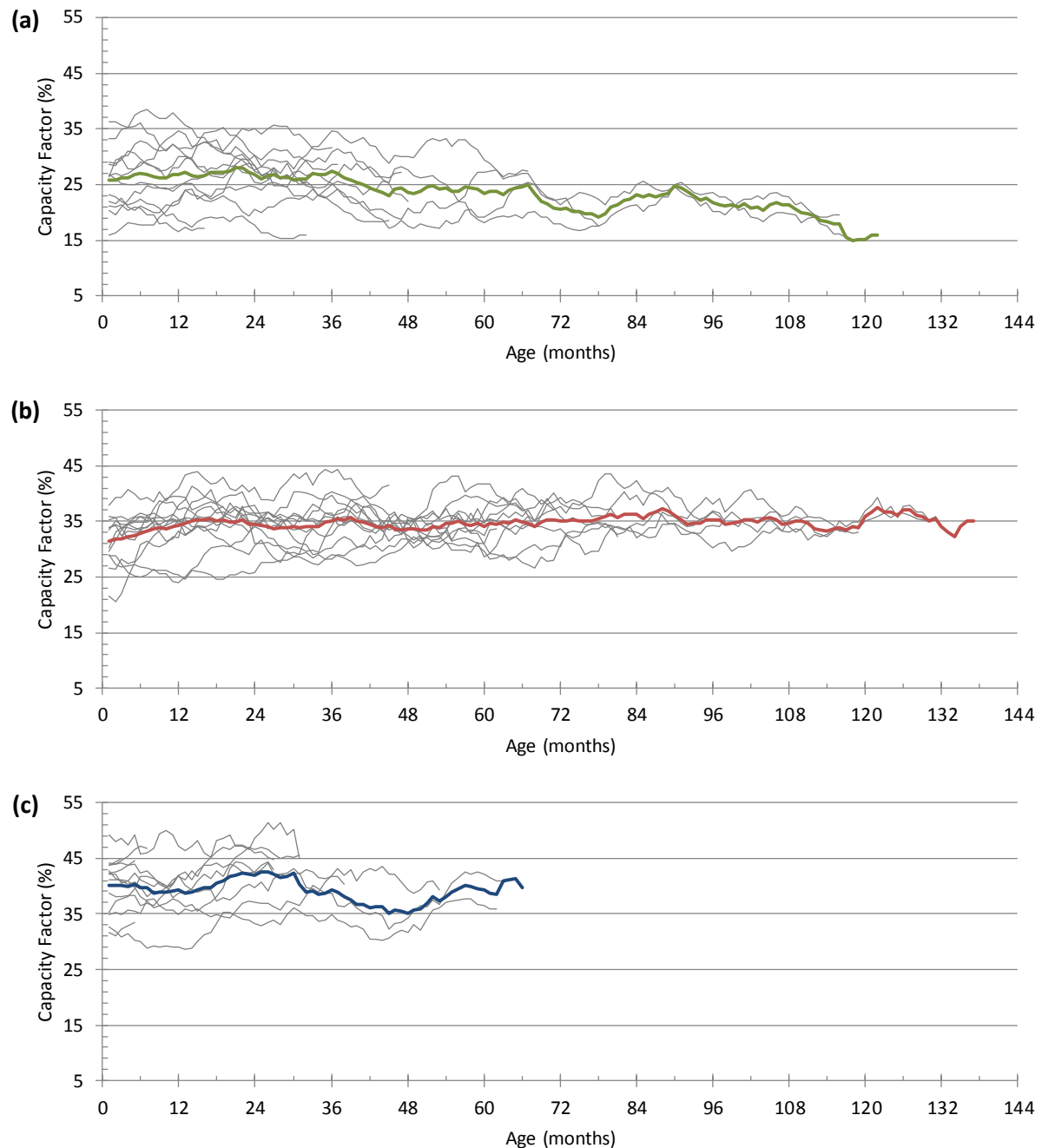
**Table 8: Capacity factor population size, mean and SEM with age for offshore R1 wind farms for this and the initial study [1].**

Farm Age (Years)	Capacity Factor Data Population	Population Size	Mean (%)	SEM (%)
0-3	Crabtree et al. [1]	166	38.4	1.0
	<b>This report</b>	<b>375</b>	<b>40.3</b>	<b>0.7</b>
3-6	Crabtree et al. [1]	NSS*	NSS*	NSS*
	<b>This report</b>	<b>138</b>	<b>37.2</b>	<b>1.3</b>

\*NSS = Not Statistically Significant

Figure 8 gives a better insight into the wind farm performance over age. For each category, the 12-month moving average of monthly capacity factor for each large wind farm (individual grey lines) and the average (thick green, red and blue lines, for onshore, Round 1 and Round 2 farms, respectively) are shown. The data confirms what already shown in [1]. Figure 8(a) shows that for onshore farms the moving average smooths the variation in performance of the different farms and reveals a downwards trend in capacity factor with increased variation beyond 36 months. However, it can be seen that those wind farms operating for more than 60 months have been consistently operating at lower capacity factors throughout their lives. The overall downward trend results from the addition of new, higher-performing wind farms which raise the average capacity factor in early years. With the constant addition of new technologies to the UK wind generation portfolio, it is difficult to produce statistically reliable results from such a dynamic data set. In the case of Round 1 offshore farms (Figure 8(b)) the capacity factor remains essentially constant with time as a result of the higher performing newer assets compensating for the low early performance of the older assets.

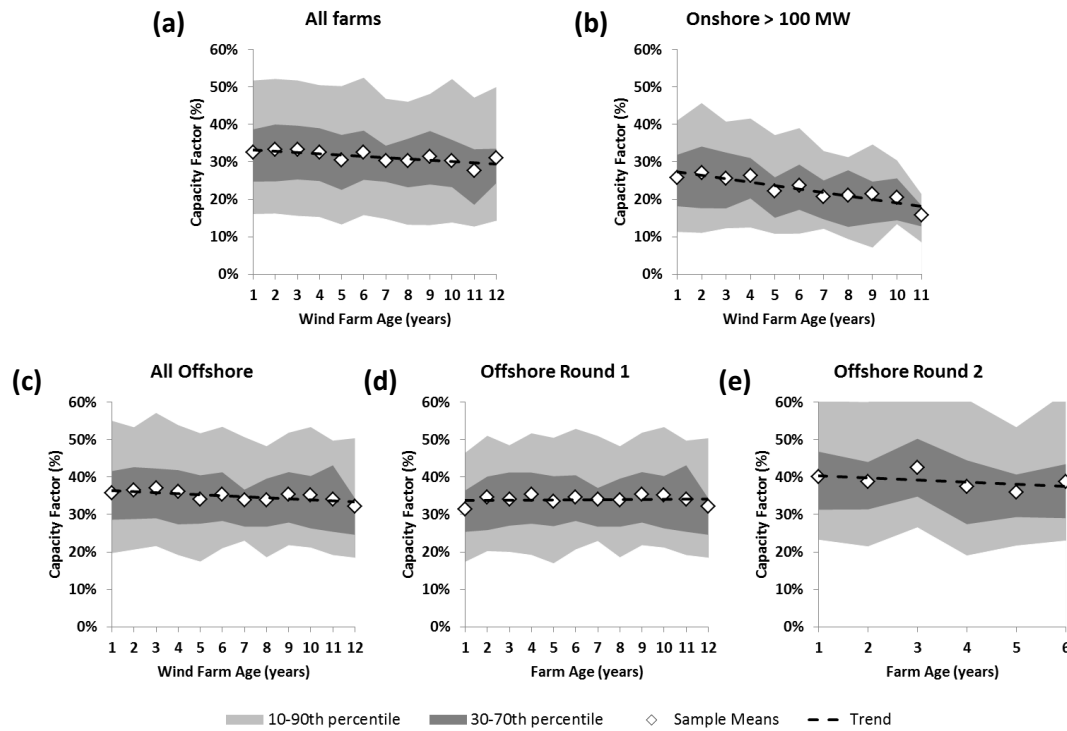
The larger and more statistically significant dataset now available for Round 2 farms (Figure 8(c)) confirms the preliminary results presented in [1]. In particular, older farms are either maintaining or improving their capacity factors whilst newer developments are coming online with higher capacity factors. Also, Round 2 wind farms are achieving higher capacity factors on average than the Round 1 sites.



**Figure 8: 12-month moving average monthly capacity factors with overall average by month of operation for (a) large onshore >100MW, (b) offshore Round 1 and (c) offshore Round 2 wind farms.**

Figure 9 shows the distribution of annual capacity factors, calculated from the monthly capacity factors, for all farms and for different subsets of the farms. The changes in absolute capacity factor are given in Table 9 and compared with preliminary results published in [1]. All farms now show a

decrease of 0.34% per annum from an initial value of 33.5%. Figure 9(b) shows the greatest decline in capacity factor with age occurs for large onshore farms. The change in onshore capacity factor illustrates a greater rate of degradation than that found in the preliminary study [1]. The analysis of the larger dataset still shows a slight increase in absolute capacity factor over time for Round 1 offshore wind farms, although lower than that described in [1]. The larger numbers of years of operating data now available for the Round 2 sites confirms the preliminary findings shown in [1], with a slight decrease in capacity factor of 0.59% per annum from an initial value of 41.0%, no more than might be expected for an aging asset.

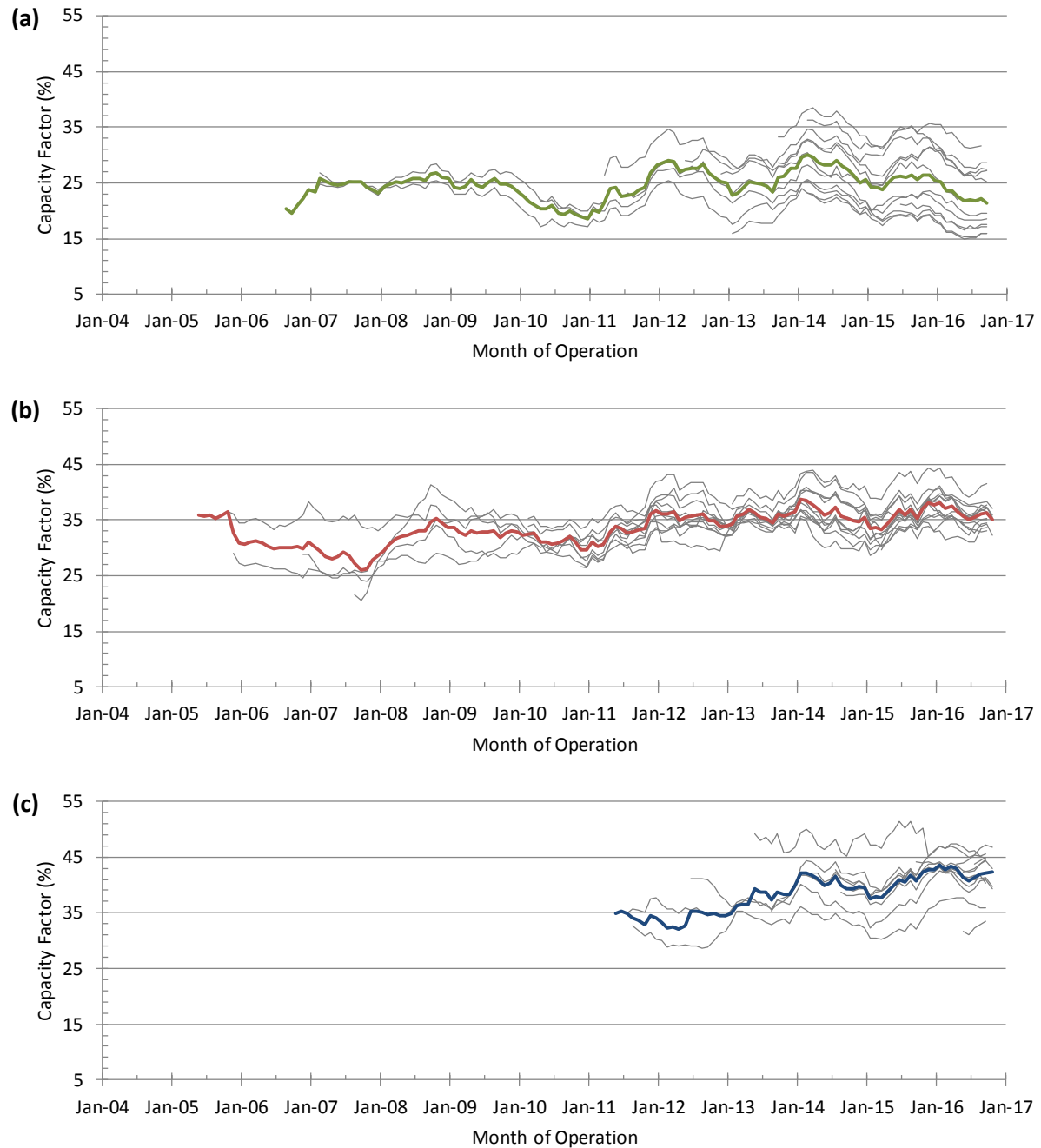


**Figure 9: Annual capacity factors (averaged from monthly capacity factors) for (a) all farms, (b) large onshore >100 MW, (c) all offshore, (d) offshore Round 1 and (e) offshore Round 2.**

**Table 9: Changes in annual capacity factors for this and the initial study [1].**

Category		Capacity Factor	
		Initial	Annual Change
All Farms	Crabtree et al. [1]	31.6%	-0.0007%
	<b>This report</b>	<b>33.5%</b>	<b>-0.34%</b>
Onshore > 100MW	Crabtree et al. [1]	28.0%	-0.75%
	<b>This report</b>	<b>28.3%</b>	<b>-0.92%</b>
All Offshore	Crabtree et al. [1]	34.5%	-0.02%
	<b>This report</b>	<b>36.8%</b>	<b>-0.28%</b>
Offshore Round 1	Crabtree et al. [1]	32.8%	0.19%
	<b>This report</b>	<b>33.7%</b>	<b>0.04%</b>
Offshore Round 2	Crabtree et al. [1]	39.5%	-0.59%
	<b>This report</b>	<b>41.0%</b>	<b>-0.59%</b>

For each category, Figure 10 shows the distribution of the monthly average capacity factors with date. In most of the cases, the newer large onshore (Figure 10(a)), Round 1 (Figure 10(b)) and Round 2 (Figure 10(c)) farms coming online tend to operate at increasing capacity factor levels, compensating for the low early performance of the older assets.



**Figure 10: 12-month moving average monthly capacity factors with overall average by date for (a) large onshore >100 MW, (b) offshore Round 1 and (c) offshore Round 2 wind farms.**

### 3. Reporting standard for wind turbine reliability data

Improving the intrinsic reliability of wind turbine assets has been identified as one of the major contributors towards achieving the offshore wind energy cost reduction target. This will be only possible through the development of standard methodologies for reliability data collection and analysis, and through close collaboration between manufacturers, operators and research organisations [1]. Higher capacity factors can result from a closer correlation between actual and design production levels for new assets. Moreover, older assets with lower production expectations can take some advantage from reliability improvements by upgrading systems and processes.

The Reliawind project was a European Union 7<sup>th</sup> Framework Integrated Project which ran from March 2008 to March 2011 with the active involvement of 10 industrial and academic partners [7], including Durham University. Reliawind had the aim of identifying, quantifying and understanding wind turbine critical failures and their mechanisms. One of the main recommendations from this project was the development of a standardised approach to wind turbine taxonomy and data collection, catering specifically for larger wind farms and making use of both automatic but filtered SCADA data and maintainers' logs [8]. A common wind turbine taxonomy to describe the allocation of parts of the turbine has been defined. The proposed taxonomy is adaptable for application to the common reliability analyses needed for wind turbines (such as Failure Mode and Effects Criticality Analysis, failure rate Pareto analysis, reliability growth analysis and Weibull analysis) and allows reliability data from different studies to be more easily compared. The intention of adopting such taxonomy was to overcome deficiencies of the data collection which can be summarised as follows:

- Consistency of naming of the systems, sub-systems, assemblies, sub-assemblies and components of WTs;
- Non traceability of the system monitored;
- Unspecified WT technology or concept;
- Problems of confidentiality between parties when exchanging data.

The Reliawind taxonomy is based on the terminology of System, Sub-System, Assembly, Sub-Assembly and Component/part. Examples of this terminology are given in Table 10. It adopts a hybrid approach, with a positional grouping for mechanical components and a functional grouping for electrical elements. This reflects the fact that electrical energy may generally be transmitted between positional elements such as between the nacelle and base of the tower, whereas mechanical energy is generally confined within positional elements.

**Table 10: Example from the Reliawind turbine taxonomy [9].**

<b>System</b>	<b>Sub-System</b>	<b>Assembly</b>	<b>Sub-Assembly</b>	<b>Part</b>
Turbine	Rotor	Electrical Pitch	Pitch motor	Brush
Turbine	Drive train	Gearbox assembly	Gearbox	Stage 1 planetary wheel
Turbine	Power	Rotor assembly	Rotor	Rotor Winding

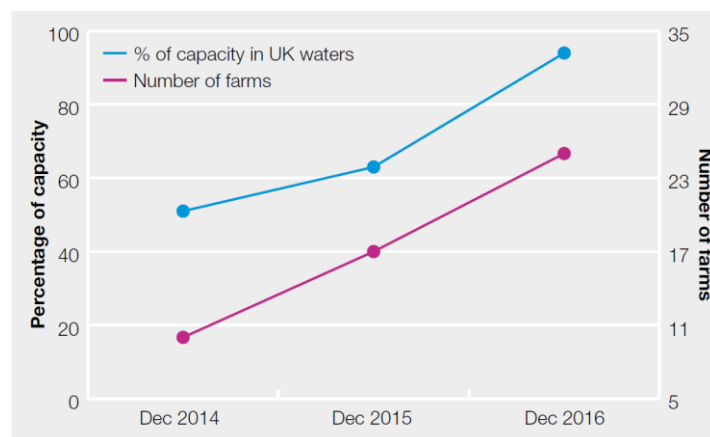
More than 4000 onshore wind turbine years of data were added to the Reliawind field reliability study database, comprising around 350 wind turbines from multiple manufacturers operating for varying lengths of time. The Reliawind study considered only modern turbines representative of standard technology with the following features: rating greater or equal to 850 kW, variable speed, pitch regulated and operating for a minimum of two years; wind farm with at least 15 turbines. 10-

minute SCADA, service records/work orders and alarm logs have been analysed to determine downtime events within the common taxonomy of subsystems and subassemblies [7] to identify critical areas of interest. This resulted in around 35,000 downtime events to be added to the common database structure. These downtime events have been analysed to determine the distribution of failure rates and downtimes between the subassemblies. The results of the Reliawind field reliability study have already been presented and discussed in detail in the first part of this deliverable, i.e. [1].

The joint industry project SPARTA (System Performance, Availability and Reliability Trend Analysis) represents the first attempt in the offshore wind industry to create a bespoke data exchange platform for sharing anonymised performance and maintenance data. This section gives a brief overview of the SPARTA project based upon the publicly available documentation. Enabled by the sponsorship of The Crown Estate and Offshore Renewable Energy (ORE) Catapult, SPARTA, initiated in 2013, ran an initial pilot phase in 2014, and progressed to full enduring operation in 2015 under the leadership of its industry steering group (Figure 11). SPARTA saw increased industry participation in the last couple of years. By the end of 2016, 93.7% of the installed capacity of UK operational offshore wind farms participated to the programme [10] (Figure 12).



**Figure 11: SPARTA structure [10].**



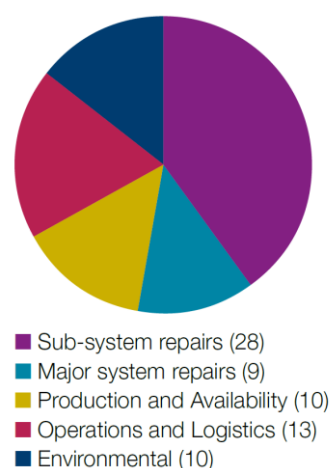
**Figure 12: SPARTA yearly participation [2].**

The SPARTA project has developed and introduced a consistent reporting standard for a range of metrics or measures covering asset availability, reliability and performance. The project provides anonymously shared data on a wide range of operational issues such as system downtime, repair

interventions, weather conditions and crew transfers. Operational data is collected at system level (from blade to onshore substation), analysed and reported upon in the form of benchmarks, allowing relative performance to be understood and acted upon by members [10]. Participants are provided with:

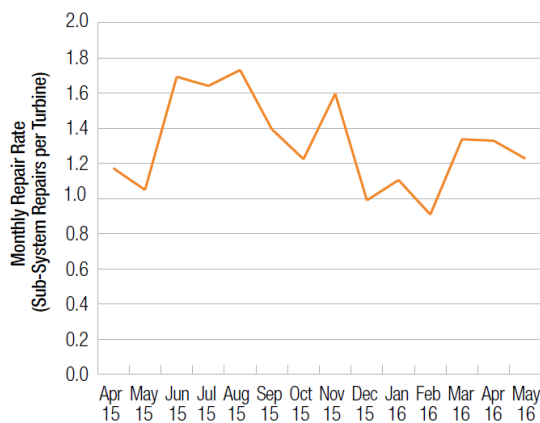
- a web-based database system for the collection and presentation of operational data, reported at wind farm system-level;
- systematic processes for quality assurance of the data and metric definition;
- collaborative initiatives to develop new measurements and Key Performance Indicators (KPI) to allow the system to evolve to suit members' needs;
- monthly benchmark and graph outputs allowing site and portfolio performance to be assessed against industry averages and acted upon.

KPI specifications are developed by a Technical Advisory Group (TAG) drawn from members and approved by the Steering Group (SG), proving a uniform way of defining the data to be reported. Based on the KPI framework each participant submits monthly metrics to a secure server for each of its wind farms for the previous month. The SG and TAG teams work with their respective site based operational teams to validate the value of each metric, and to continuously improve the standardisation of the collection and calculation methods. Currently, operational data is collected across 767 KPI metrics, compiled on monthly basis [10] and covering a range of performance measures including: repairs, turbine availability, cable and grid outages, and heavy-lifting vessel usage [11]. The current standard set of metric reporting can be broken down in to the five categories shown in Figure 13. Owner/operator participants are provided with robust and reliable benchmarked data, helping to identify operational improvements and cost reduction opportunities at both company and sector-wide levels.

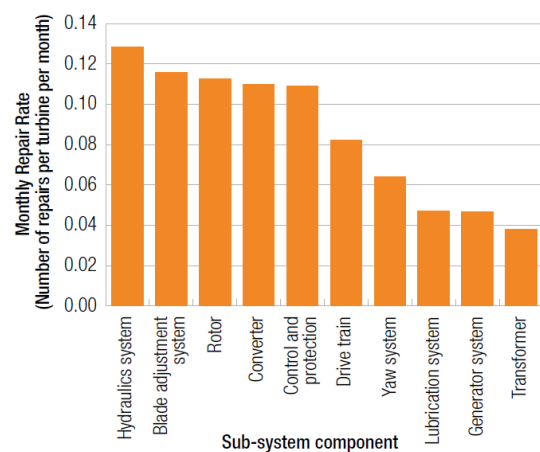


**Figure 13: SPARTA KPIs [10].**

Experience acquired within the SPARTA project shows that benchmarking of comparative reliability results can show areas for improvement, and identify areas for future, more detailed metric requirements once major gaps have been eliminated or mitigated as far as possible [10]. Figure 15 shows the mean monthly total sub-system repairs per turbine across the SPARTA population, with an average monthly repair rate of 1.32 repairs per turbine per month. As expected, many more repairs are carried out in the summer months. The SPARTA repair data are broken down to the sub-system level in Figure 15 showing the top 10 wind farm sub-components that require the most interventions.



**Figure 14: Sub-System Monthly Repair Rate [10].**



**Figure 15: Comparison of Sub-System Monthly Repair Rates [10].**

The SPARTA platform aims to support improvements in the availability, reliability and performance of offshore wind assets, thereby cutting the cost of electricity generated from offshore wind. Benefits will be in the form of operational change, sector innovation, investment and development. The main potential long term benefits of the project have been identified as:

- Reduction in equipment failures which cost the UK offshore wind industry around £150m in 2012.
- A 0.1% industry-wide improvement in availability arising as a consequence of SPARTA against the 2012 offshore wind-generated volume of 7.5TWh, could equate to an increase in income of £10m.

Further development of the programme was approved in 2016, and it includes plans to [2]:

- Secure 100% of the offshore commercial wind farms on to the system;
- Release of version 3.0 of the benchmarking system, with greatly improved user functionality and analysis capability.
- Introduce a pilot project with G+ Global Offshore Wind Health and Safety Organisation to investigate the value of integrating performance metrics with H&S statistics. This should enable incidence data to be cross correlated with frequency of operations, providing a deeper insight into the significance of incidents and their contributory factors.
- Expand the programme to encompass projects in European waters to enhance the value of the database for all participants.

## 4. Conclusions

Capacity factor data from UK offshore wind farms has been analysed, providing an insight into the current performance of large Round 2 offshore wind farms compared to the earlier Round 1 farms and to onshore farms. The data used in the study covers more than 10000 turbine years of operation. The results have been compared against initial findings from Crabtree et al. [1], based on a smaller dataset of less than 6000 filtered turbine years. The most up-to-date data analysis confirms the general trend shown by the preliminary results, in particular:

- UK wind farms perform better offshore than onshore, thanks to the favourable characteristics of offshore wind resource.
- The more recently installed Round 2 offshore wind farms, further from shore, tend to have higher capacity factors than earlier Round 1 sites, due to higher wind speeds and more modern turbines. This suggests that the industry is applying the learning from early experiences to achieve better performances at the more recently installed farms.
- Round 2 offshore farms are achieving an average monthly capacity factor of 37.0% with a peak value of 69.5%. The older Round 1 farms have a lower average capacity factor of 32.7% while large onshore farms with capacities above 100 MW have achieved 24.6%.
- Overall, UK offshore farms have achieved an average monthly capacity factor of 35.6% compared to 24.6% onshore, during full operation. In isolation, Round 2 farms achieved a higher average monthly capacity factor of 39.4%.
- Peak monthly offshore capacity factors have risen to as high as 77.8% for Round 2 farms compared to 64.1% for UK large onshore farms.
- Onshore wind farms see a decrease (by year of operation) in average annual capacity factor of 0.92% per year, greater than that found in the initial study [3]. However, there is clear indication that a part of this decrease is the result of the changing portfolio of wind farms. The newer farms generally demonstrate a higher capacity factor and this skews the earlier data.

Increasing reliability has been identified as one of the key features towards achieving the reduction of offshore wind energy. However, the need for more open sharing of operating data across the wind industry and research community to accelerate the development process has been highlighted. The EU FP7 Reliawind Consortium has first developed a standard approach to wind turbine taxonomy and data collection to allow consistent reliability studies of data from multiple manufacturers' wind turbines. The main results of the Reliawind field study have been reviewed based upon the publicly available documentation. The ongoing SPARTA (System Performance, Availability and Reliability Trend Analysis) project aims at creating the first UK offshore wind database for sharing anonymised offshore wind farm performance and maintenance data. The current state of the art and future planned developments of the SPARTA programme have been reviewed based upon the publicly available documentation.

## 5. References

- [1] Crabtree, C. J., Zappalá, D. & Hogg, S. I., *Wind Energy: UK Experiences and Offshore Operational Challenges*, Proceedings of the Institution of Mechanical Engineers, Part A: Journal of Power and Energy 229(7): 727-746, 2015.
- [2] The Crown Estate, *Offshore wind operational report January – December 2016*. [15<sup>th</sup> September 2017]; Available from <https://www.thecrownestate.co.uk/energy-minerals-and-infrastructure/offshore-wind-energy/>.
- [3] Renewable Energy Foundation, 2017 [17<sup>th</sup> July 2017]; Available from: <http://www.ref.org.uk/generators/index.php>.
- [4] Feng, Y., Tavner P.J. & Long, H., *Early Experiences with UK Round 1 Wind Farms*, ICE Energy, 163(EN4):167-181, 2010.
- [5] Hughes, G., *The Performance of Wind Farms in the United Kingdom and Denmark*, Renewable Energy Foundation, 2012.
- [6] Staffell, I. & Green, R., *How does wind farm performance decline with age?*, Renewable Energy 66:775-786, 2014.
- [7] CORDIS (Community Research and Development Information Service), *RELIAWIND Report Summary*, 2013. [15<sup>th</sup> October 2017]; Available from [http://cordis.europa.eu/result/rcn/55560\\_en.html](http://cordis.europa.eu/result/rcn/55560_en.html).
- [8] Wilkinson, M., *Measuring Wind Turbine Reliability - Results of the Reliawind Project*, Proceedings of the Scientific Track of the European Wind Energy Association Conference. Brussels, Belgium, 2011.
- [9] Wilkinson, M., Hendriks, B., Spinato, F., Gomez, E., Bulacio, H., Roca, J. et al., *Methodology and Results of the ReliaWind Reliability Field Study*, Proceedings of the Scientific Track of the European Wind Energy Association Conference. Warsaw, Poland, 2010.
- [10] SPARTA, *Portfolio Review 2016*, 2017. [24<sup>th</sup> October 2017]; Available from <https://ore.catapult.org.uk/wp-content/uploads/2016/05/SPARTA.pdf>.
- [11] Offshore Renewable Energy Catapult and The Crown Estate, *SPARTA: The performance data exchange platform for offshore wind*, 2014. [9<sup>th</sup> March 2017]; Available from <https://ore.catapult.org.uk/wp-content/uploads/2016/05/SPARTA-1.pdf>.